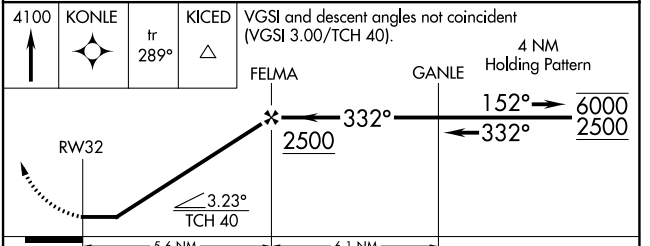
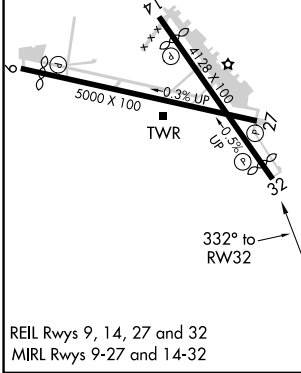
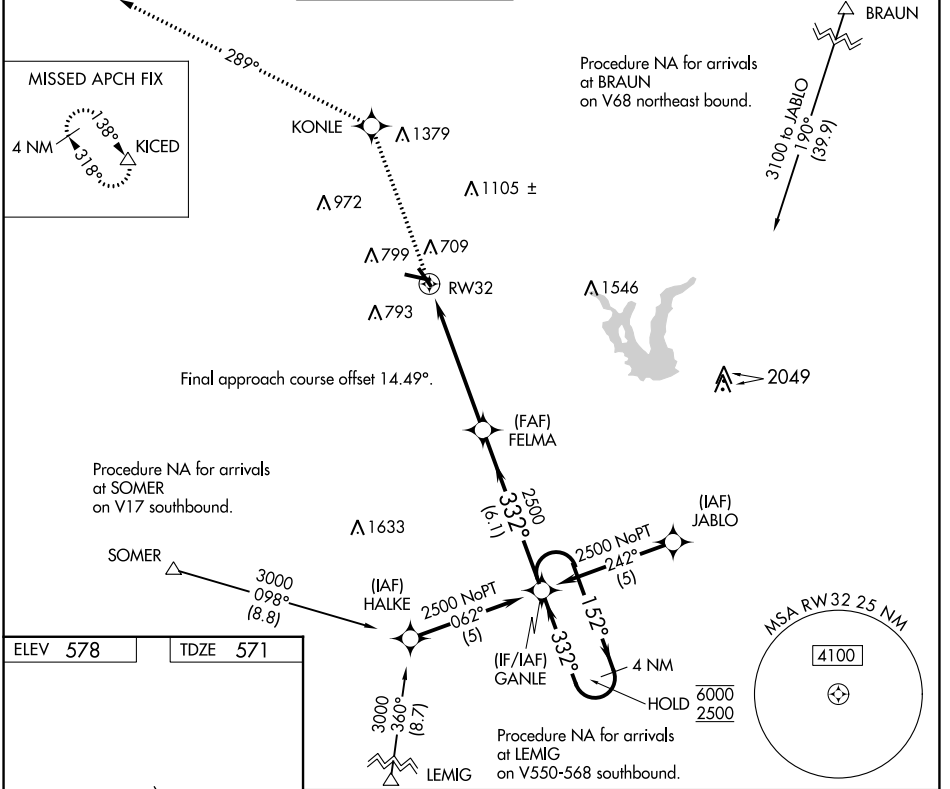


APP CRS <b>332°</b>	Rwy Idg TDZE Apt Elev	<b>3756</b> <b>571</b> <b>578</b>
------------------------	-----------------------------	---

# RNAV (GPS) RWY 32

STINSON MUNI (SSF)

RNP APCH-GPS.		MISSED APPROACH: Climb to 4100 direct KONLE and on track 289° to KICED and hold.			
ATIS <b>128.8</b>	SAN ANTONIO APP CON <b>125.7 290.225</b>	STINSON TOWER ★ <b>118.2 (CTAF) 379.9</b>	GND CON <b>121.7 379.9</b>	CLNC DEL <b>121.7</b> (When twr closed)	UNICOM <b>122.95</b>



CATEGORY	A	B	C	D
LNAV MDA	1020-1	449 (500-1)	1020-1 3/8 449 (500-1 3/8)	NA
CIRCLING	1040-1 462 (500-1)	1120-1 542 (600-1)	1260-2 682 (700-2)	NA

SC-3, 21 MAR 2024 to 18 APR 2024

SC-3, 21 MAR 2024 to 18 APR 2024