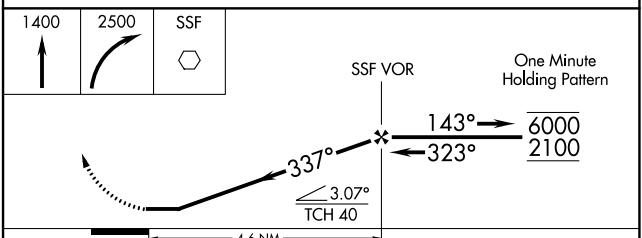
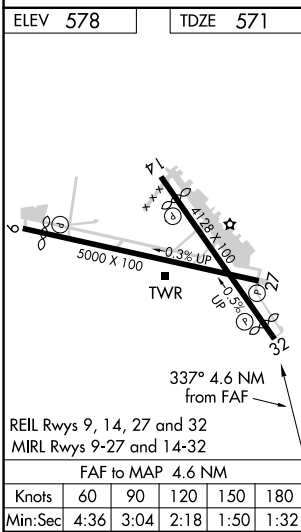
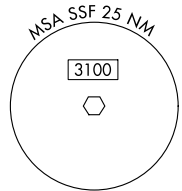
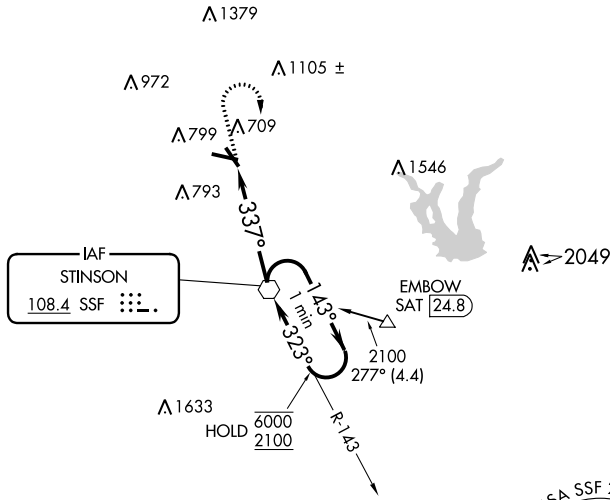


VOR SSF 108.4	APP CRS 337°	Rwy Idg 3756 TDZE 571 Apt Elev 578
-------------------------	------------------------	---

VOR RWY 32

STINSON MUNI (SSF)

<p>▼ Rwy 32 helicopter visibility reduction below 1 SM NA. Straight-in Rwy 32 NA at night, Circling Rwy 9, 14, and 32 NA at night.</p>		<p>MISSED APPROACH: Climb to 1400 then climbing right turn to 2500 direct SSF VOR and hold.</p>			
ATIS 128.8	SAN ANTONIO APP CON 125.7 290.225	STINSON TOWER* 118.2(CTAF) 379.9	GND CON 121.7 379.9	CLNC DEL 121.7 (When twr closed)	UNICOM 122.95



CATEGORY	A	B	C	D
S-32	1020-1 449 (500-1)		1020-1 $\frac{3}{8}$ 449 (500-1 $\frac{3}{8}$)	NA
CIRCLING	1040-1 462 (500-1)	1120-1 542 (600-1)	1260-2 682 (700-2)	NA

SC-3, 21 MAR 2024 to 18 APR 2024

SC-3, 21 MAR 2024 to 18 APR 2024