

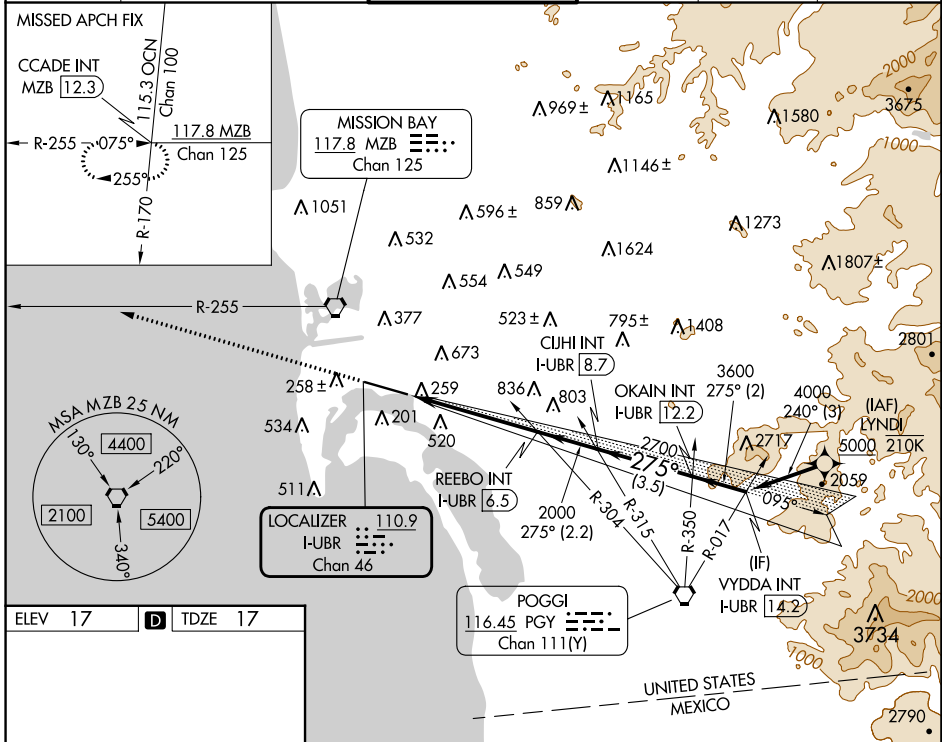
LOC/DME I-UBR <b>110.9</b> Chan <b>46</b>	APP CRS <b>275°</b>	Rwy Idg TDZE Apt Elev <b>7591</b> <b>17</b> <b>17</b>
---	------------------------	--

# LOC RWY 27

## SAN DIEGO INTL (SAN)

From LYNDI: RNAV 1-DME/DME/IRU or GPS required.	MAIS ④	MISSED APPROACH: Climb to 2500 on heading 275° and on MZB VORTAC R-255 to CCADE INT/MZB 12.3 DME and hold.
RNAV 1-DME/DME/IRU or GPS required for procedure entry.		
<p><b>▼</b> Rwy 27 helicopter visibility reduction below 1 SM NA. Circling NA north of Rwy 9-27. Inop table does not apply to Cats A and B. For inop ALS, increase S-27 Cats C and D visibility to 1/8 SM.</p>		

D-ATIS <b>134.8</b>	SOCAL APP CON <b>119.6 363.1 (WEST)</b> <b>124.35 279.625 (EAST)</b>	LINDBERGH TOWER <b>118.3 338.225</b>	GND CON <b>123.9</b>	CLNC DEL <b>125.9</b>	CPDLC
------------------------	--	---	-------------------------	--------------------------	-------



ELEV 17	<b>D</b>	TDZE 17												
<p>TDZ/CL Rwy 9 and 27 HIRL Rwy 9-27</p> <p>FAF to MAP 5.2 NM</p> <table border="1"> <tr> <td>Knots</td> <td>60</td> <td>90</td> <td>120</td> <td>150</td> <td>180</td> </tr> <tr> <td>Min:Sec</td> <td>5:12</td> <td>3:28</td> <td>2:36</td> <td>2:05</td> <td>1:44</td> </tr> </table>			Knots	60	90	120	150	180	Min:Sec	5:12	3:28	2:36	2:05	1:44
Knots	60	90	120	150	180									
Min:Sec	5:12	3:28	2:36	2:05	1:44									

2500	MZB R-255	CCADE INT	VYDDA INT I-UBR 14.2	
hdg 275°				
	REEBO INT I-UBR 6.5	CUJHI INT I-UBR 8.7	OKAIN INT I-UBR 12.2	
			4000	
	I-UBR 1.3	2700	3600	
	≤ 3.50° TCH 65			
	5.2 NM	2.2 NM	3.5 NM	
			2 NM	
CATEGORY	A	B	C	D
S-27	680-1	663 (700-1)	680-1¾	663 (700-1¾)
<b>C</b> CIRCLING	820-1	803 (900-1)	840-2½	940-3
			823 (900-2½)	923 (1000-3)

SW-3, 21 MAR 2024 to 18 APR 2024

SW-3, 21 MAR 2024 to 18 APR 2024