

SAN DIEGO, CALIFORNIA

AL-373 (FAA)

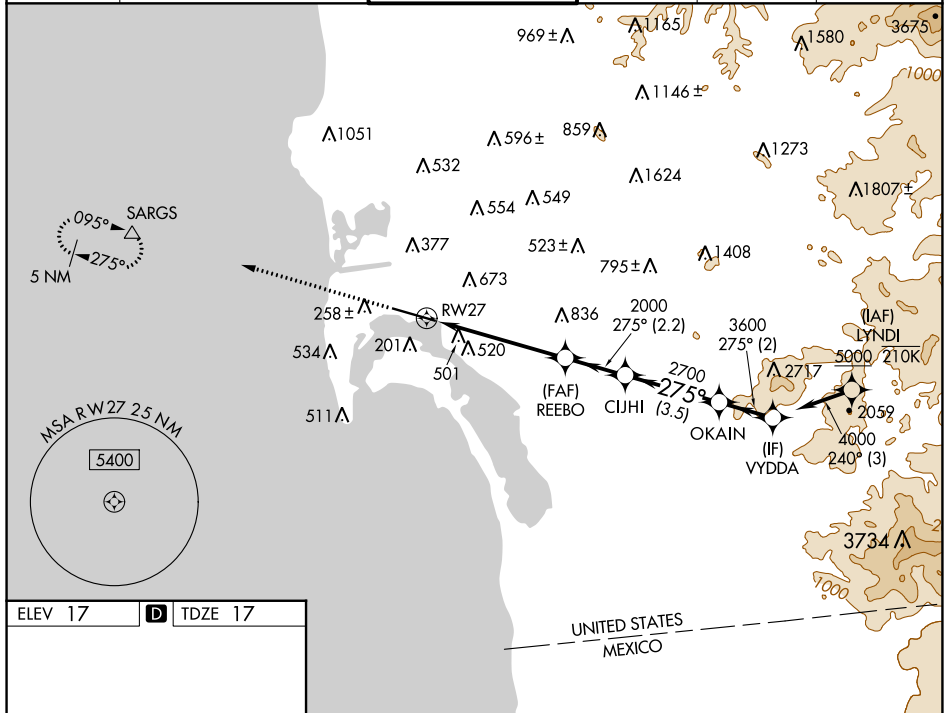
22251

WAAS CH 82527 W27A	APP CRS 275°	Rwy Idg TDZE Apt Elev	7591 17 17
--	------------------------	-----------------------------	---------------------------------------

RNAV (GPS) Y RWY 27
SAN DIEGO INTL (SAN)

RNP APCH.	MALS 	MISSED APPROACH: Climb to 2500 direct SARGS and hold.
<p>▼ Rwy 27 helicopter visibility reduction below RVR 5000 NA. Straight-in Rwy 27 at night, operational VGSJ required, remain on or above VGSJ glidepath until threshold. Circling NA north of Rwy 9-27. For inop ALS, increase LNAV Cats C/D visibility to 2 SM. Inop table does not apply to LP Cats A/B and LNAV Cat A.</p>		

D-ATIS 134.8	SOCAL APP CON 119.6 363.1(WEST) 124.35 279.625(EAST)	LINDBERGH TOWER 118.3 338.225	GND CON 123.9	CLNC DEL 125.9	CPDLC
------------------------	--	---	-------------------------	--------------------------	-------



ELEV 17	D	TDZE 17	
	2500	SARGS	VYDDA
TDZ/CL Rws 9 and 27 HIRL Rwy 9-27	↑	△	
	RWY 27		
	5.2 NM	2.2 NM	3.5 NM
CATEGORY	A	B	C
LP MDA	680/50	663 (700-1)	680-1¾ 663 (700-1¾)
LNAV MDA	760/50 743 (800-1)	760/55 743 (800-1)	760-1⅞ 743 (800-1⅞)
C CIRCLING	820-1 803 (900-1)	820-1¼ 803 (900-1¼)	820-2½ 803 (900-2½)
			D 940-3 923 (1000-3)

SAN DIEGO, CALIFORNIA
Amdt 4A 15AUG19

32°44'N-117°11'W

SAN DIEGO INTL (SAN)
RNAV (GPS) Y RWY 27

SW-3, 21 MAR 2024 to 18 APR 2024

SW-3, 21 MAR 2024 to 18 APR 2024