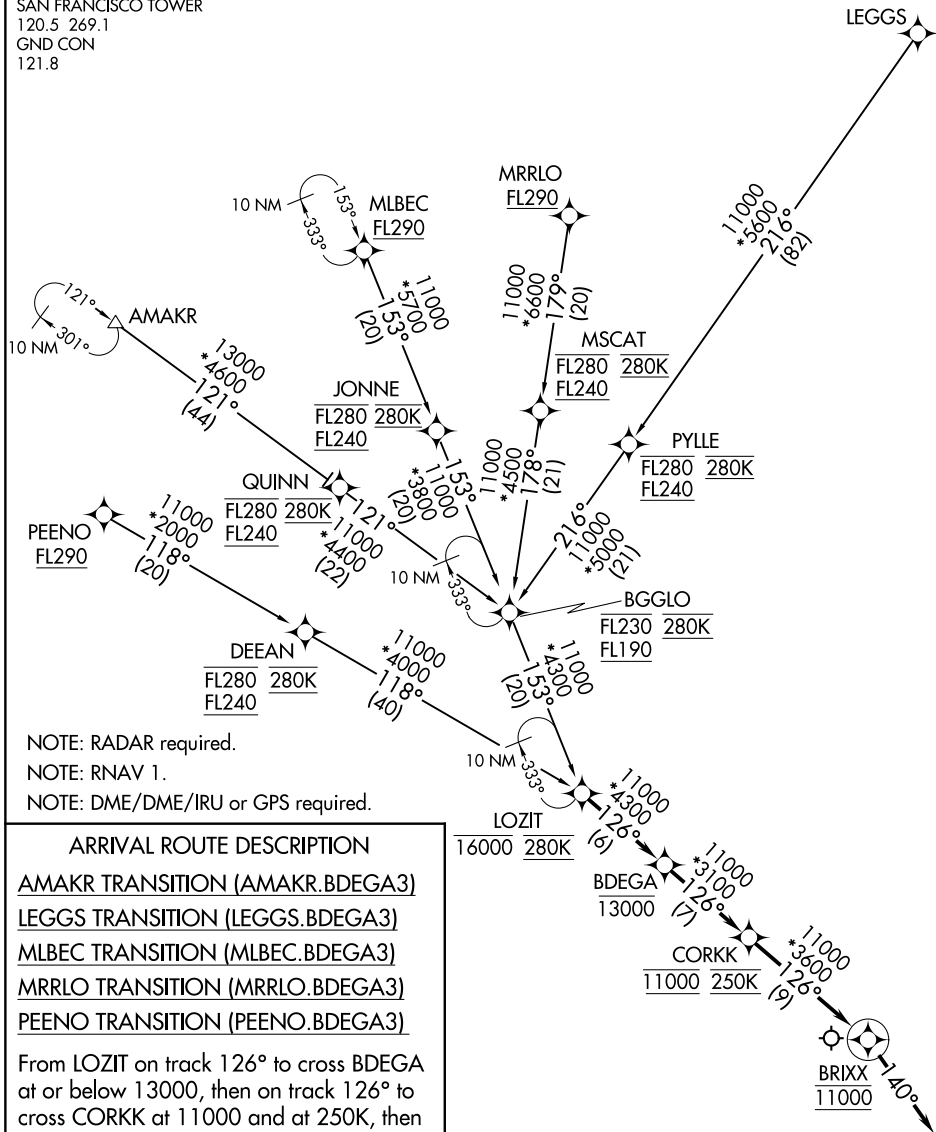


# BDEGA THREE ARRIVAL (RNAV)

AL-375 (FAA)



OAKLAND CENTER  
125.85 323.0  
NORCAL APP CON  
133.95 317.6  
D-ATIS  
113.7 115.8 118.85  
SAN FRANCISCO TOWER  
120.5 269.1  
GND CON  
121.8



NOTE: RADAR required.  
NOTE: RNAV 1.  
NOTE: DME/DME/IRU or GPS required.

### ARRIVAL ROUTE DESCRIPTION

AMAKR TRANSITION (AMAKR.BDEGA3)

LEGGs TRANSITION (LEGGs.BDEGA3)

MLBEC TRANSITION (MLBEC.BDEGA3)

MRRLO TRANSITION (MRRLO.BDEGA3)

PEENO TRANSITION (PEENO.BDEGA3)

From LOZIT on track 126° to cross BDEGA at or below 13000, then on track 126° to cross CORKK at 11000 and at 250K, then on track 126° to BRIXX, then on track 140°.  
Expect RADAR vectors to final approach course.

NOTE: Chart not to scale.

# BDEGA THREE ARRIVAL (RNAV)

SW-2, 21 MAR 2024 to 18 APR 2024

SW-2, 21 MAR 2024 to 18 APR 2024