

CIITY THREE DEPARTURE (RNAV)

AL-375 (FAA)

SAN FRANCISCO INTL (SFO)
SAN FRANCISCO, CALIFORNIA

SW-2, 21 MAR 2024 to 18 APR 2024

TOP ALTITUDE:
FL190

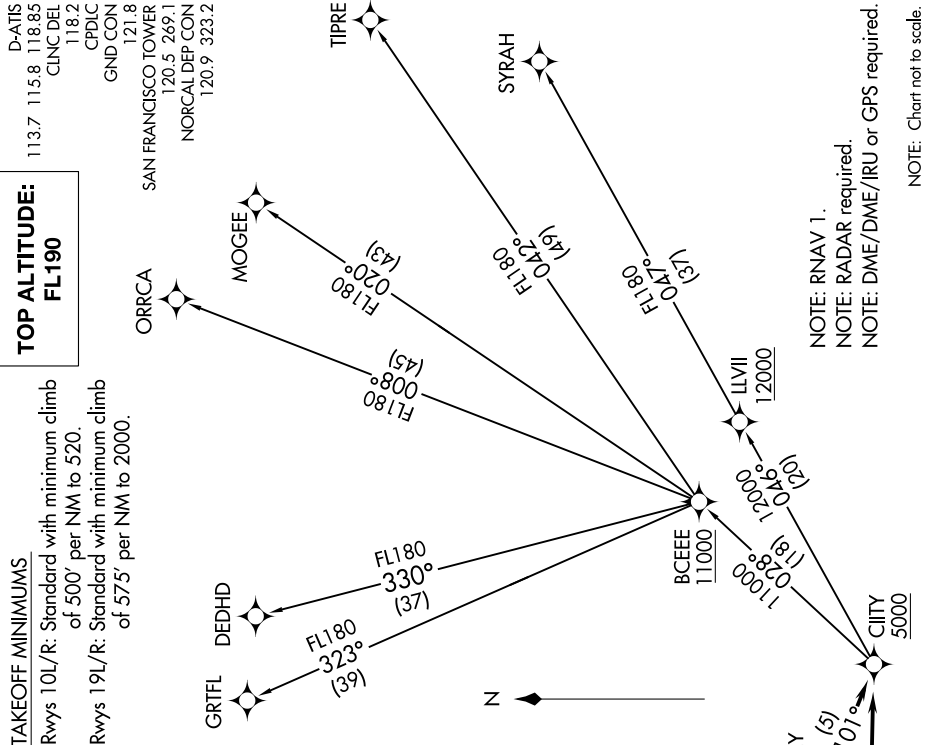
TAKEOFF MINIMUMS
Rwys 10L/R: Standard with minimum climb of 500' per NM to 520.
Rwys 19L/R: Standard with minimum climb of 575' per NM to 2000.

DEPARTURE ROUTE DESCRIPTION

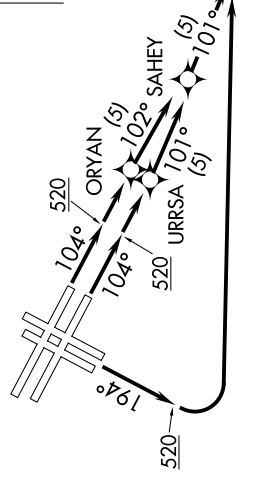
TAKEOFF RUNWAY 10L: Climb heading 104° to 520, then direct ORYAN, then on track 102° to SAHEY, then on track 101° to cross CIITY at or above 5000. Thence. . . .
TAKEOFF RUNWAY 10R: Climb heading 104° to 520, then direct URRSA, then on track 101° to SAHEY, then on track 101° to cross CIITY at or above 5000. Thence. . . .
TAKEOFF RUNWAYS 19L/19R: Climb heading 194° to 520, then left turn direct to cross CIITY at or above 5000. Thence. . . .

. . . on (transition). Maintain FL190. Expect filed altitude 10 minutes after departure.

- DEDHD TRANSITION (CIITY3.DEDHD)
- GRITFL TRANSITION (CIITY3.GRITFL)
- MOGEE TRANSITION (CIITY3.MOGEE)
- ORRCA TRANSITION (CIITY3.ORRCA)
- SYRAH TRANSITION (CIITY3.SYRAH)
- TIPRE TRANSITION (CIITY3.TIPRE)



NOTE: RNAV 1.
 NOTE: RADAR required.
 NOTE: DME/DME/IRU or GPS required.
 NOTE: Chart not to scale.



SW-2, 21 MAR 2024 to 18 APR 2024

CIITY THREE DEPARTURE (RNAV)