

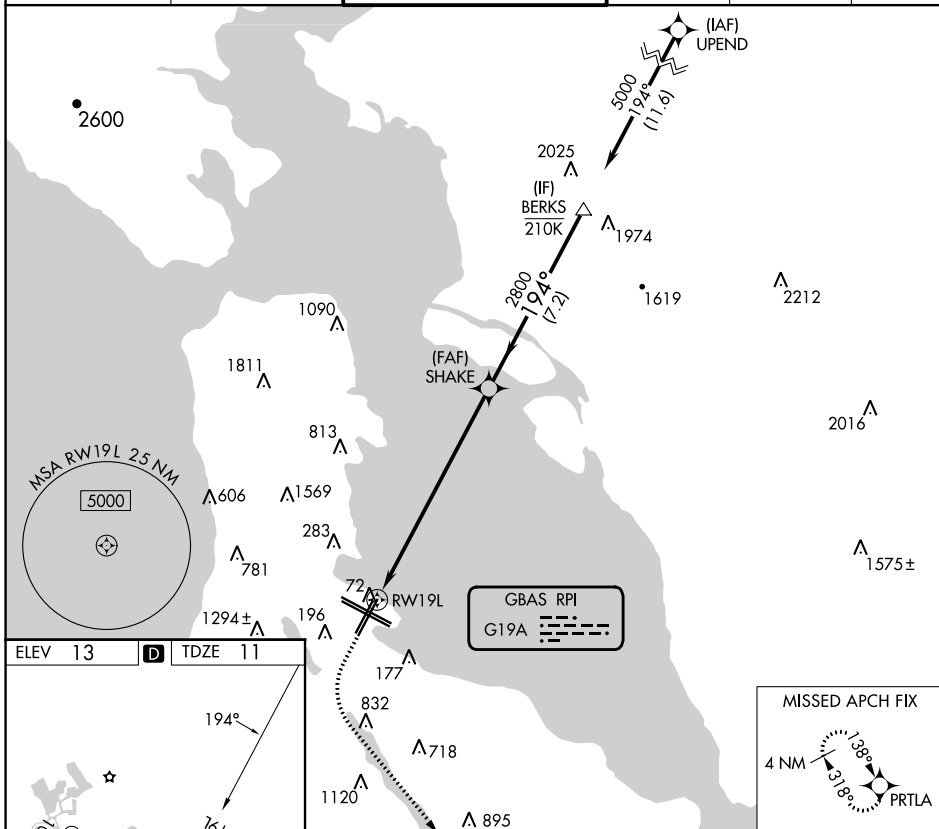
GBAS CH 21448 G 19A	APP CRS 194°	Rwy Idg TDZE Apt Elev	8650 11 13
---	------------------------	-----------------------------	---------------------------------------

GLS RWY 19L

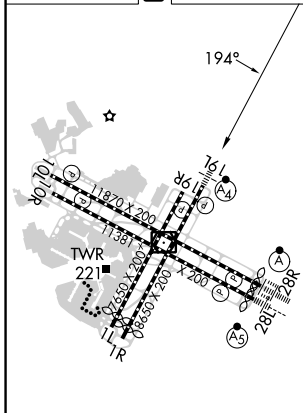
SAN FRANCISCO INTL (SFO)

RNP APCH-GPS.	MALSF	MISSED APPROACH: Climb to 920 then climbing left turn to 4000 direct PRTLA and hold. Missed approach requires minimum climb of 357 feet per NM to 2000.
<p>Autopilot coupled approach NA below 293 feet.</p> <p>For inop ALS, increase GLS visibility to RVR 4500.</p>		

D-ATIS 113.7 115.8 118.85	NORCAL APP CON 134.5 338.2	SAN FRANCISCO TOWER 120.5 269.1	GND CON 121.8	CLNC DEL 118.2	CPDLC
---	--------------------------------------	---	-------------------------	--------------------------	-------

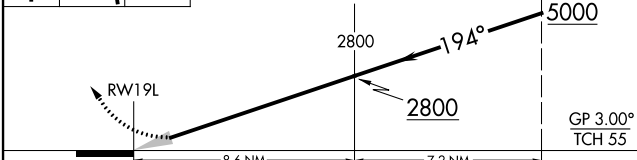


ELEV 13	D	TDZE 11
---------	----------	---------



TDZ/CL Rwy 19L and 28R
REIL Rwy 1L, 1R and 10L
HIRL all Rwy

920	4000	PRTLA	VGSI and GLS glidepath not coincident (VGSI Angle 3.00/TCH 71).	BERKS
-----	------	-------	---	-------



CATEGORY	A	B	C	D
GLS DA	293/40		282 (300-3/4)	

SW-2, 21 MAR 2024 to 18 APR 2024

SW-2, 21 MAR 2024 to 18 APR 2024