

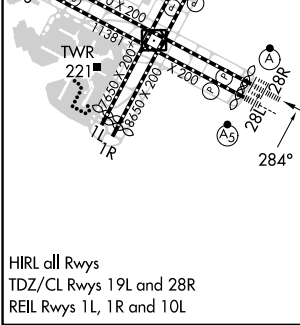
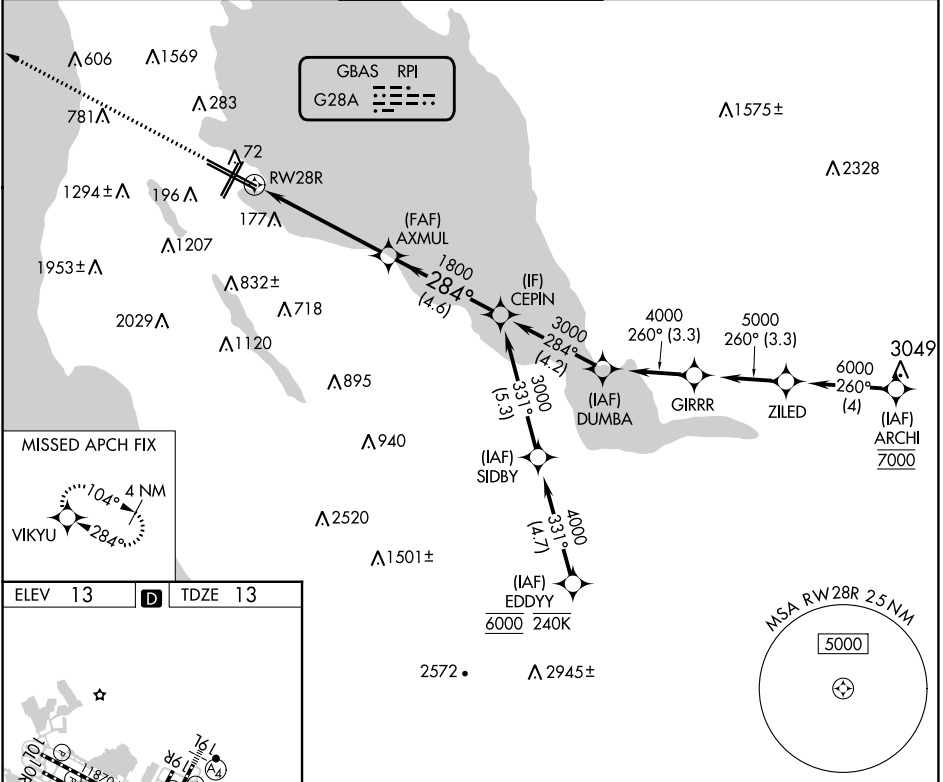
| | | |
|--|------------------------|--|
| GBAS CH 20626 G28A | APP CRS 284° | Rwy Idg 11236 TDZE 13 Apt Elev 13 |
|--|------------------------|--|

GLS RWY 28R

SAN FRANCISCO INTL (SFO)

| | | | | | |
|--|--|-------------|--|--|--|
| RNP APCH-GPS. | | ALSIF-2 | MISSED APPROACH: Climb to 3200 direct VIKYU and hold. *Missed approach requires minimum climb of 350 feet per NM to 1900; if unable to meet climb gradient, see RNAV (GPS) Z RWY 28R. | | |
| Simultaneous approach authorized. Simultaneous operations require use of vertical guidance; maintain last assigned altitude until established on glidepath. Use of FD or AP required during simultaneous operations. Autopilot coupled approach NA below 213 feet. | | | | | |

| | | | | | |
|---|--------------------------------------|---|-------------------------|--------------------------|-------|
| D-ATIS 113.7 115.8 118.85 | NORCAL APP CON 134.5 338.2 | SAN FRANCISCO TOWER 120.5 269.1 | GND CON 121.8 | CLNC DEL 118.2 | CPDLC |
|---|--------------------------------------|---|-------------------------|--------------------------|-------|



| | | | | |
|----------|----------------------|---|--------|-------|
| 3200 | VIKYU | VGSI and GLS glidepath not coincident (VGSI Angle 3.00/TCH 68). | | CEPIN |
| | | AXMUL | | |
| | | 1800 | 284° | 3000 |
| | | | 1800 | |
| | | RWY 28R | | |
| | | 5.4 NM | 4.6 NM | |
| CATEGORY | A | B | C | D |
| GLS DA* | 213/18 200 (200-1/2) | | | |

SW-2, 21 MAR 2024 to 18 APR 2024

SW-2, 21 MAR 2024 to 18 APR 2024