

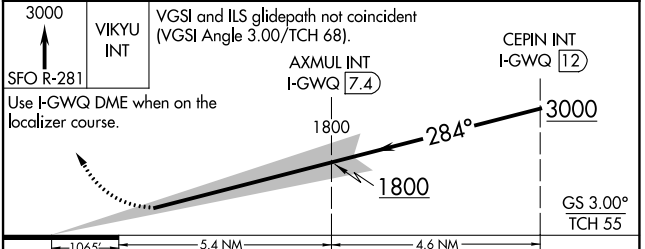
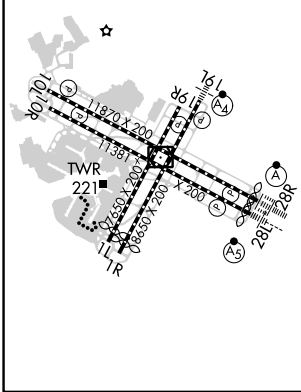
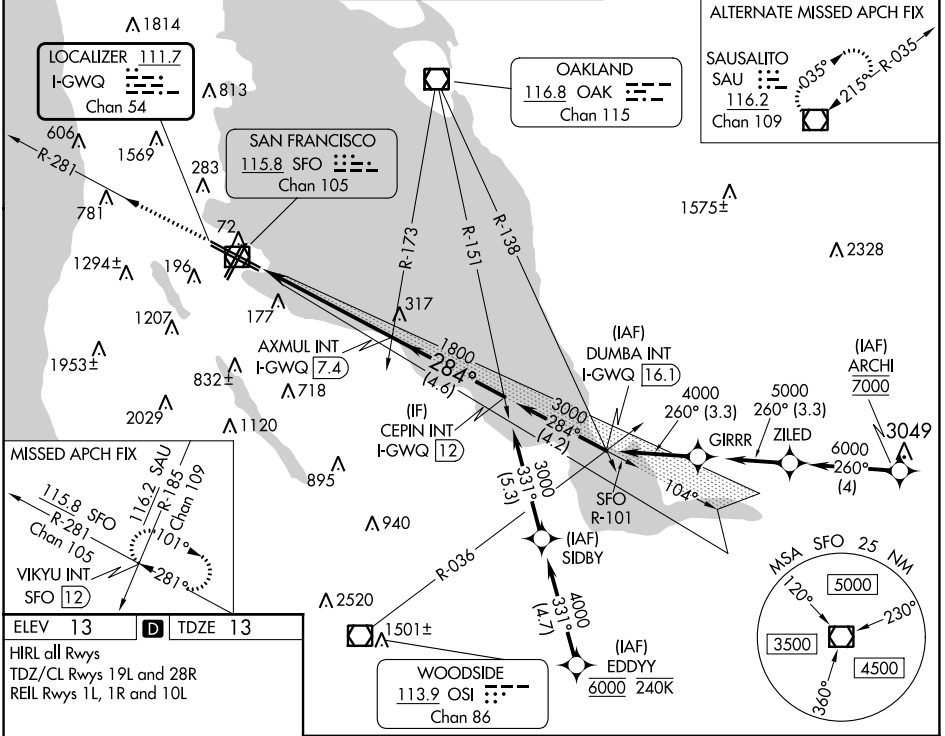
LOC/DME I-GWQ 111.7 Chan 54	APP CRS 284°	Rwy Idg 11236 TDZE 13 Apt Elev 13
--	------------------------	--

ILS RWY 28R (SA CAT I)

SAN FRANCISCO INTL (SFO)

RNAV 1-GPS or RADAR required for procedure entry. Requires specific OPSPEC, MSPEC, or LOA approval and use of HUD to DH.	ALSF-2 	MISSED APPROACH: Climb to 3000 on SFO VOR/DME R-281 to VIKYU INT/SFO 12 DME and hold. *Missed approach requires minimum climb of 350 feet per NM to 1900; if unable to meet climb gradient, see ILS or LOC RWY 28L.
---	------------	--

D-ATIS 113.7 115.8 118.85	NORCAL APP CON 134.5 338.2	SAN FRANCISCO TOWER 120.5 269.1	GND CON 121.8	CLNC DEL 118.2	CPDLC
-------------------------------------	--------------------------------------	---	-------------------------	--------------------------	-------



CATEGORY	A	B	C	D
S-ILS 28R*	RA 163/14 150 DA 163			

SA CATEGORY I ILS - SPECIAL AIRCREW & AIRCRAFT CERTIFICATION REQUIRED

SW-2, 21 MAR 2024 to 18 APR 2024

SW-2, 21 MAR 2024 to 18 APR 2024