

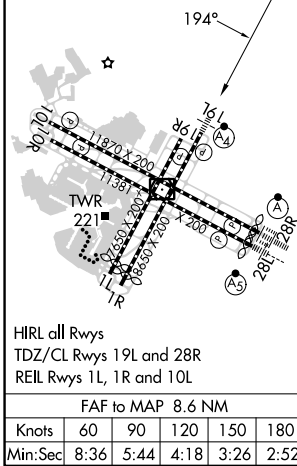
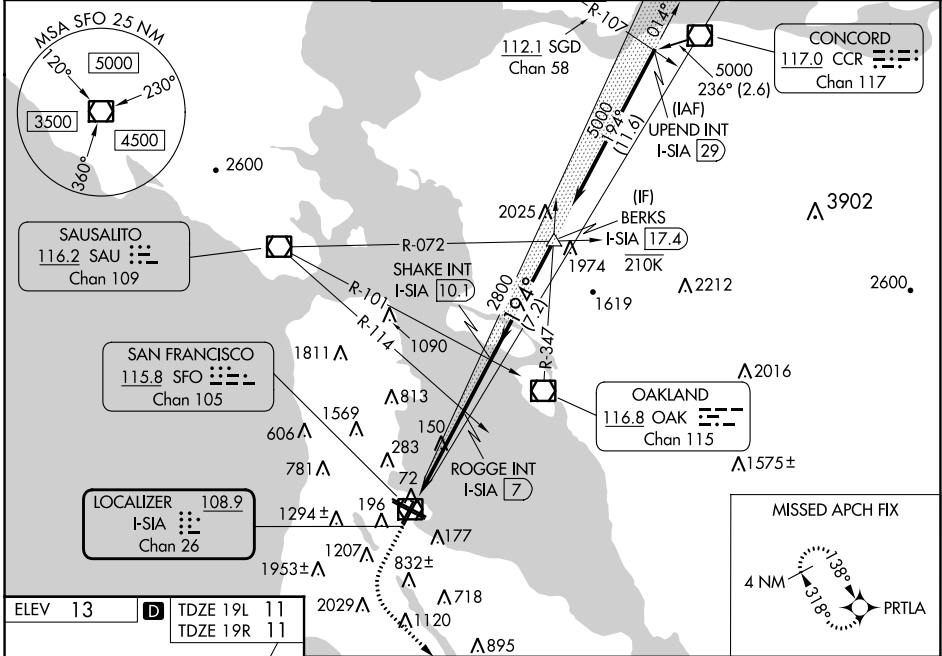
LOC/DME I-SIA 108.9 Chan 26	APP CRS 194°	Rwy Idg TDZE Apt Elev	19L 8650 11 13	19R 7650 11 13
---	------------------------	-----------------------------	--	--

ILS or LOC RWY 19L

SAN FRANCISCO INTL (SFO)

RNP APCH - GPS.	MALSf Rwy 19L	MISSED APPROACH: Climb to 1100 then climbing left turn to 4000 direct to PRTLA and hold. *Missed approach requires minimum climb of 357 feet per NM to 2000.
-----------------	---------------	---

D-ATIS 113.7 115.8 118.85	NORCAL APP CON 134.5 338.2	SAN FRANCISCO TOWER 120.5 269.1	GND CON 121.8	CLNC DEL 118.2	CPDLC
-------------------------------------	--------------------------------------	---	-------------------------	--------------------------	-------



1100	4000	PRTLA	VGSI and ILS glidepath not coincident (VGSI Angle 3.00/TCH 71).	BERKS I-SIA [17.4]
		SHAKE INT I-SIA [10.1]	ROGGE INT I-SIA [7]	2800
		I-SIA [1.5]	I-SIA [4]	1800
		2.5 NM	3 NM	3.1 NM
		7.2 NM	5000	GS 3.00° TCH 55

CATEGORY	A	B	C	D
S-ILS 19L*	300/40		289 (300-¾)	
S-ILS 19L	774-2		763 (800-2)	
S-LOC 19L	1800-1¼ 1789 (1800-1¼)	1800-1½ 1789 (1800-1½)	1800-3 1789 (1800-3)	
ROGGE FIX MINIMUMS (DUAL VOR RECEIVERS OR DME REQUIRED)				
S-LOC 19L	880/40 869 (900-¾)	880/55 869 (900-1)	880-2½ 869 (900-2½)	
SIDESTEP 19R	880-2 869 (900-2)		880-3 869 (900-3)	