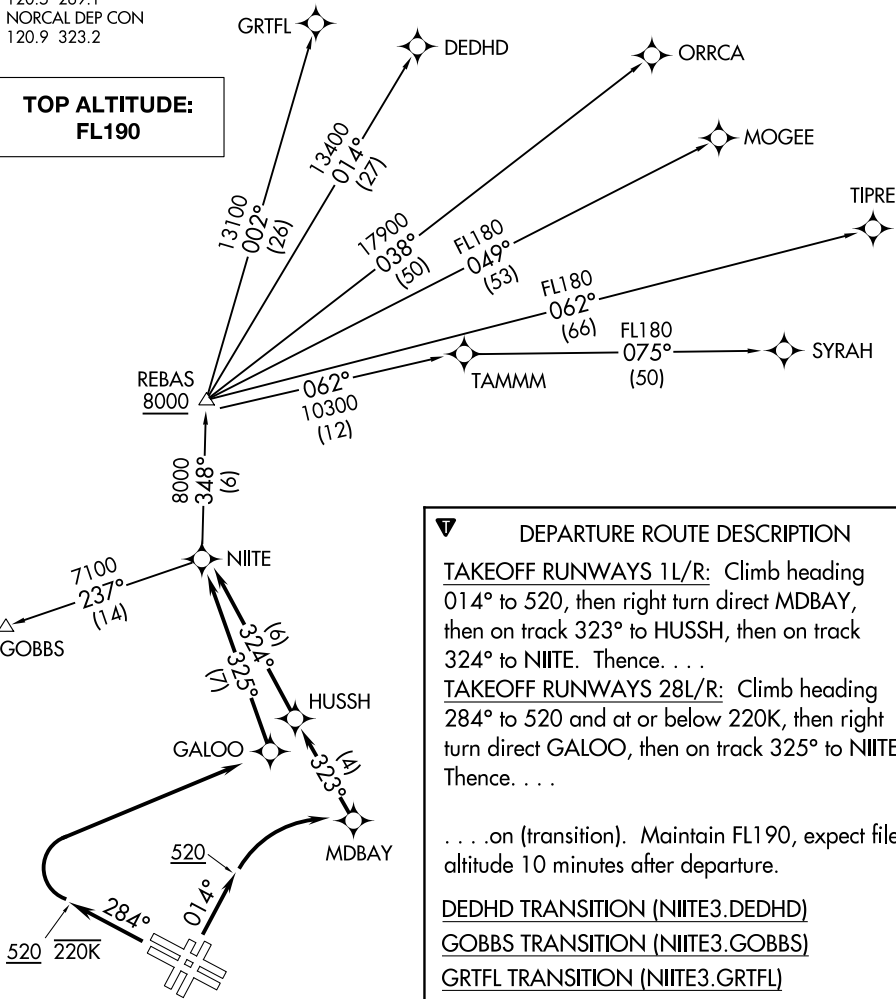


D-ATIS  
113.7 115.8 118.85  
CLNC DEL  
118.2  
CPDLC  
GND CON  
121.8  
SAN FRANCISCO TOWER  
120.5 269.1  
NORCAL DEP CON  
120.9 323.2

TAKEOFF MINIMUMS

Rwys 1L/R: Standard with a minimum climb of 500' per NM to 520.  
Rwy 28L: Standard with minimum climb of 535' per NM to 2100.  
Rwy 28R: Standard with minimum climb of 560' per NM to 2100.

**TOP ALTITUDE:  
FL190**



NOTE: RNAV 1.  
NOTE: RADAR required.  
NOTE: DME/DME/IRU or GPS required.

NOTE: Chart not to scale.

**DEPARTURE ROUTE DESCRIPTION**

TAKEOFF RUNWAYS 1L/R: Climb heading 014° to 520, then right turn direct MDBAY, then on track 323° to HUSSH, then on track 324° to NIITE. Thence. . .

TAKEOFF RUNWAYS 28L/R: Climb heading 284° to 520 and at or below 220K, then right turn direct GALOO, then on track 325° to NIITE. Thence. . .

. . . on (transition). Maintain FL190, expect filed altitude 10 minutes after departure.

DEDHD TRANSITION (NIITE3.DEDHD)

GOBBS TRANSITION (NIITE3.GOBBS)

GRNFL TRANSITION (NIITE3.GRNFL)

MOGEE TRANSITION (NIITE3.MOGEE)

ORRCA TRANSITION (NIITE3.ORRCA)

SYRAH TRANSITION (NIITE3.SYRAH)

TIPRE TRANSITION (NIITE3.TIPRE)