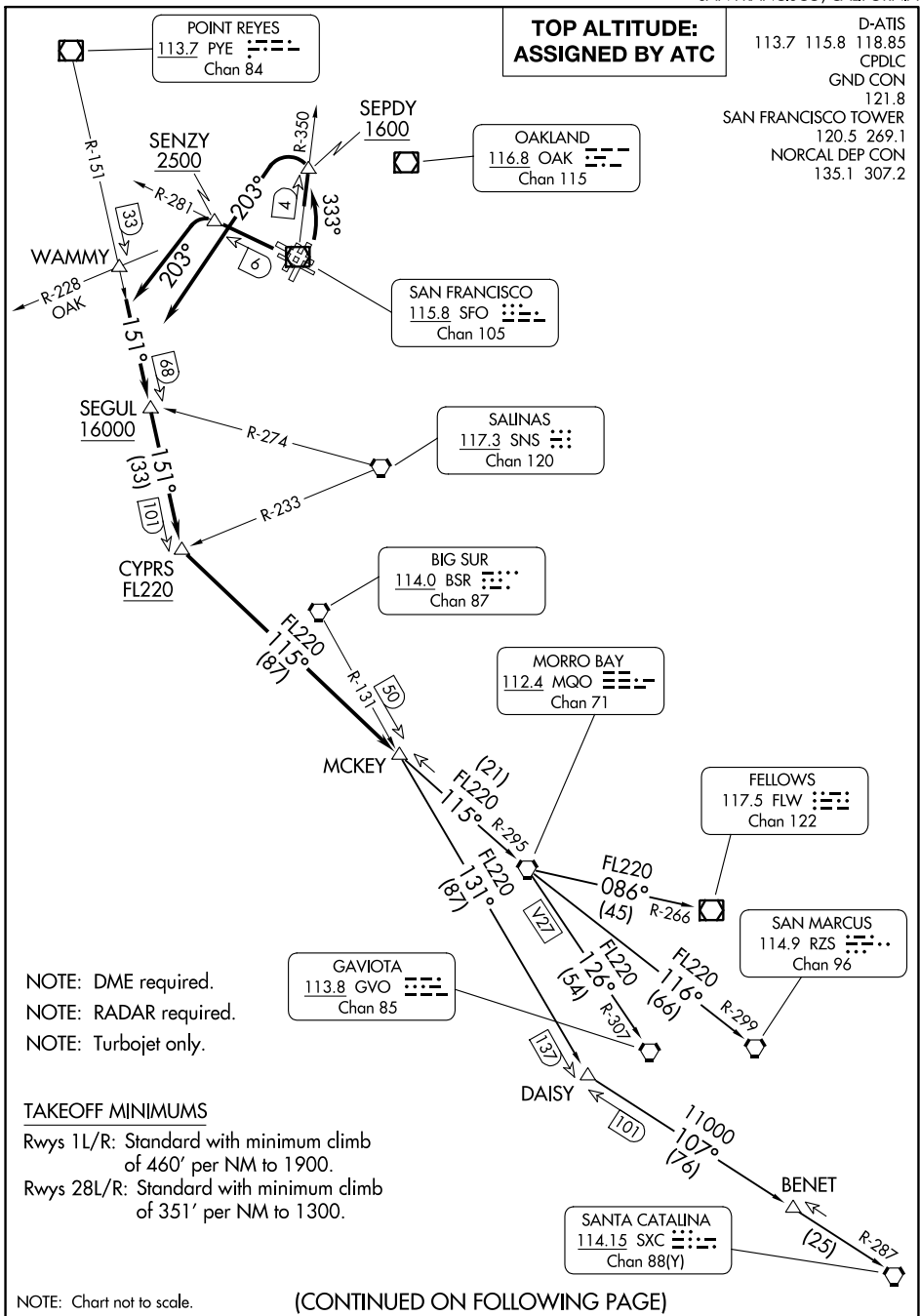


# OFFSHORE TWO DEPARTURE

AL-375 (FAA)

SAN FRANCISCO INTL (SFO)  
SAN FRANCISCO, CALIFORNIA



SW-2, 21 MAR 2024 to 18 APR 2024

SW-2, 21 MAR 2024 to 18 APR 2024

NOTE: DME required.  
 NOTE: RADAR required.  
 NOTE: Turbojet only.

### TAKEOFF MINIMUMS

Rwys 1L/R: Standard with minimum climb  
of 460' per NM to 1900.  
 Rwys 28L/R: Standard with minimum climb  
of 351' per NM to 1300.

NOTE: Chart not to scale.

(CONTINUED ON FOLLOWING PAGE)

# OFFSHORE TWO DEPARTURE

SAN FRANCISCO, CALIFORNIA  
SAN FRANCISCO INTL (SFO)