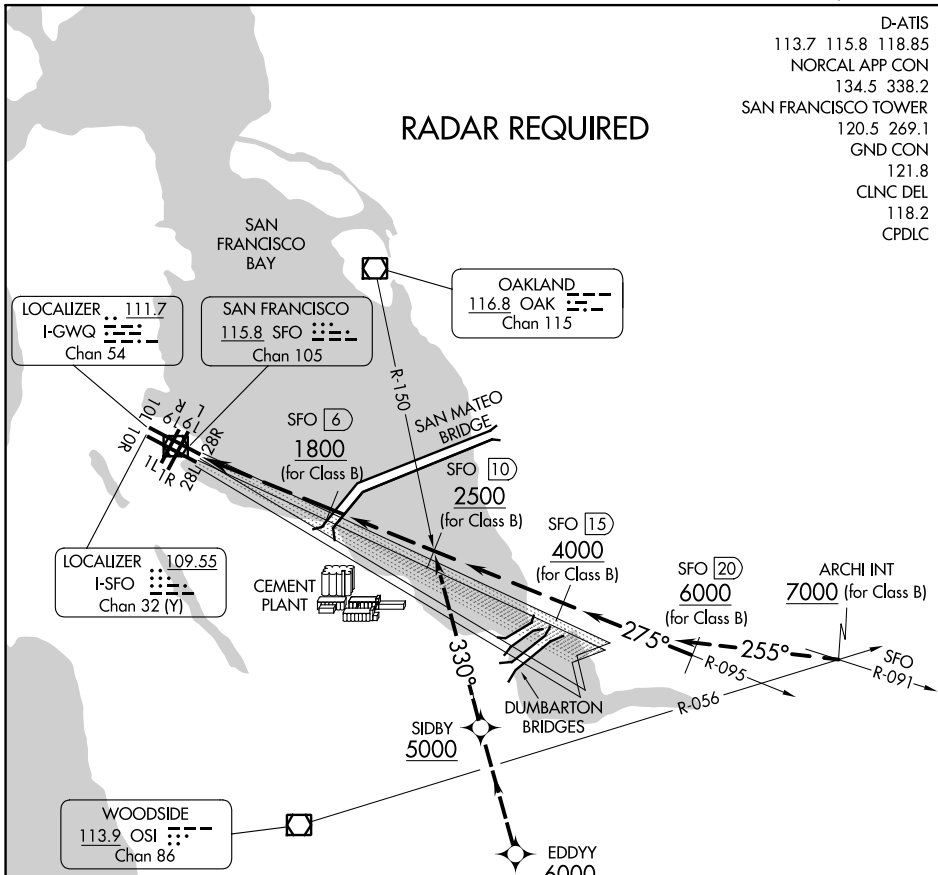


QUIET BRIDGE VISUAL RWY 28L/R

SAN FRANCISCO INTL (SFO)
SAN FRANCISCO, CALIFORNIA

D-ATIS
113.7 115.8 118.85
NORCAL APP CON
134.5 338.2
SAN FRANCISCO TOWER
120.5 269.1
GND CON
121.8
CLNC DEL
118.2
CPDLC

RADAR REQUIRED



SW-2, 21 MAR 2024 to 18 APR 2024

SW-2, 21 MAR 2024 to 18 APR 2024

Vertical Guidance Navaid and Angle: LOC I-GWQ (GS 3.00°)

Weather Minimums: SFO 2500'/5 or SFO 1000'/3 with 5 mile visibility in eastern quadrant (030° to 120°) and San Mateo AWOS 2400'/5 (If AWOS inoperative, SQL 2400'/5).

1	2	3	4	5	6	7	8	9	10	11	12	13	14	15	16	17	18	19	20	21	22	23	24	25	26	27	28	29	30	31	32
---	---	---	---	---	---	---	---	---	----	----	----	----	----	----	----	----	----	----	----	----	----	----	----	----	----	----	----	----	----	----	----

QUIET BRIDGE VISUAL APPROACH RUNWAY 28L/R

NOTE: Closely spaced parallel visual approaches may be in progress to Runway 28L utilizing I-SFO. In the event of a go-around on Runway 28L, turn left heading 265° or on Runway 28R, heading 280°, climb and maintain 3000 or as directed by ATC.

QUIET BRIDGE VISUAL RWY 28L/R

SAN FRANCISCO, CALIFORNIA
SAN FRANCISCO INTL (SFO)