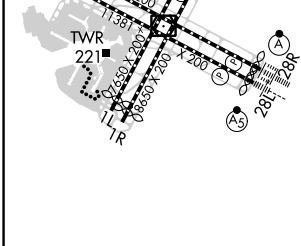
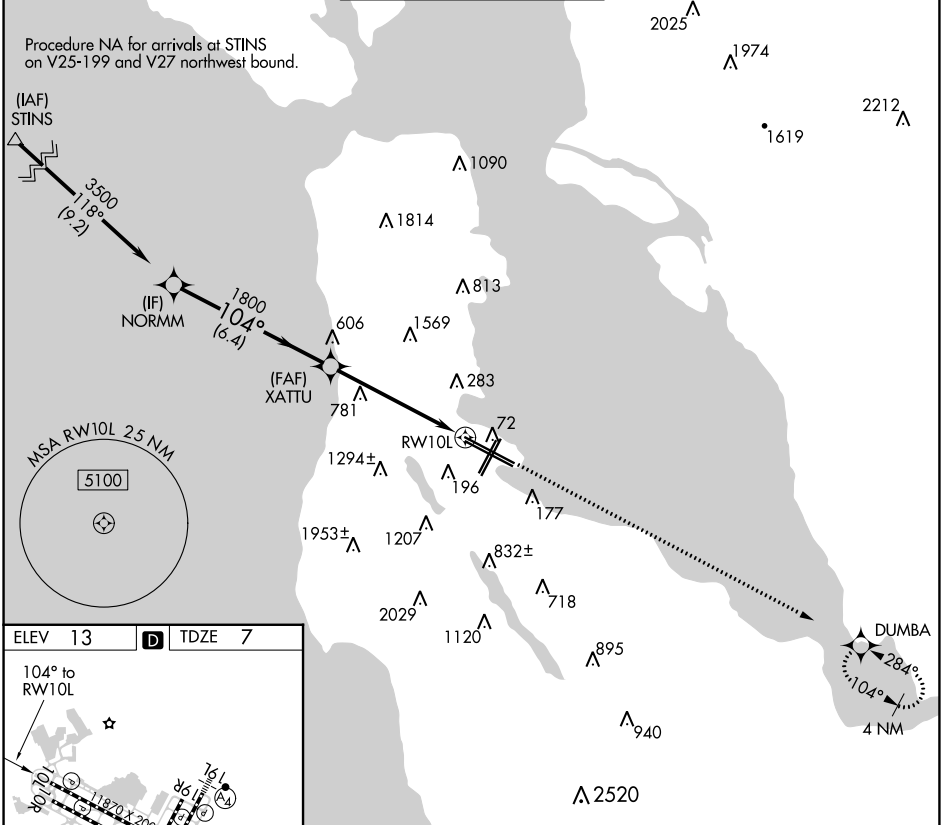


APP CRS <b>104°</b>	Rwy Idg <b>11193</b>
	TDZE <b>7</b>
	Apt Elev <b>13</b>

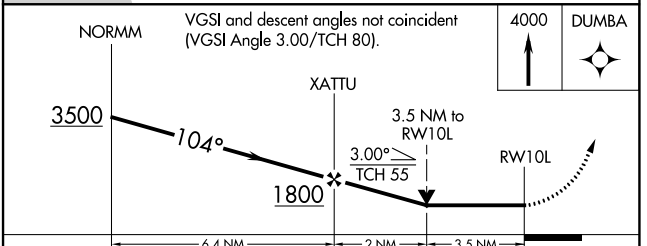
# RNAV (GPS) RWY 10L

SAN FRANCISCO INTL (SFO)

<p><b>▽</b> DME/DME RNP-0.3 NA. <b>△</b> Helicopter visibility reduction below RVR 4000 NA.</p>		<p>MISSED APPROACH: Climb to 4000 direct DUMBA and hold.</p>			
D-ATIS <b>113.7 115.8 118.85</b>	NORCAL APP CON <b>134.5 338.2</b>	SAN FRANCISCO TOWER <b>120.5 269.1</b>	GND CON <b>121.8</b>	CLNC DEL <b>118.2</b>	CPDLC



TDZ/CL Rwy 19L and 28R  
REIL Rwy 1L, 1R, and 10L  
HIRL all Rwy



CATEGORY	A	B	C	D
LNAV MDA	1200/60 1193 (1200-1¼)	1200-1½ 1193 (1200-1½)	1200-3	1193 (1200-3)

SW-2, 21 MAR 2024 to 18 APR 2024

SW-2, 21 MAR 2024 to 18 APR 2024