

RNAV (RNP) Y RWY 28R

SAN FRANCISCO INTL (SFO)

APP CRS	Rwy Idg	11236
284°	TDZE	13
	Apt Elev	13

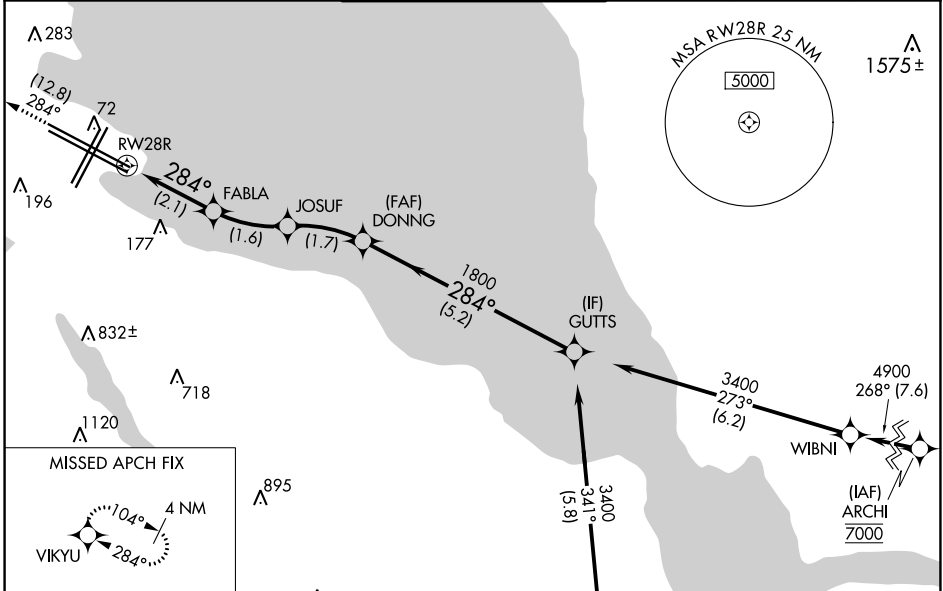
RNP AR APCH, RF required.

▼ For uncompensated Baro-VNAV systems, procedure NA below 3°C or above 54°C. For inop ALS, increase RNP 0.11 all Cats visibility to RVR 4000 and RNP 0.30 all Cats visibility to RVR 4500.

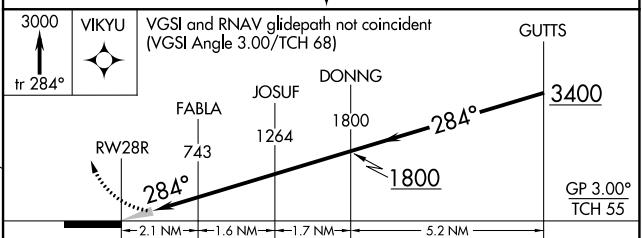
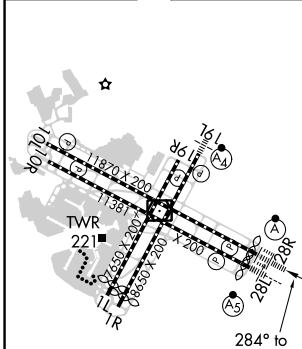
ALSF-2

MISSED APPROACH: Climb to 3000 on track 284° to VIKYU and hold.
 * Missed approach requires minimum climb of 250 feet per NM to 1600.
 # Missed approach requires minimum climb of 350 feet per NM to 2100.

D-ATIS 113.7 115.8 118.85	NORCAL APP CON 134.5 338.2	SAN FRANCISCO TOWER 120.5 269.1	GND CON 121.8	CLNC DEL 118.2	CPDLC
---	--------------------------------------	---	-------------------------	--------------------------	-------



ELEV 13	D	TDZE 13
---------	----------	---------



CATEGORY	A	B	C	D
RNP 0.11 DA*		263/24	250 (300-½)	
RNP 0.30 DA#		326/24	313 (400-½)	

AUTHORIZATION REQUIRED

SW-2, 21 MAR 2024 to 18 APR 2024

SW-2, 21 MAR 2024 to 18 APR 2024