

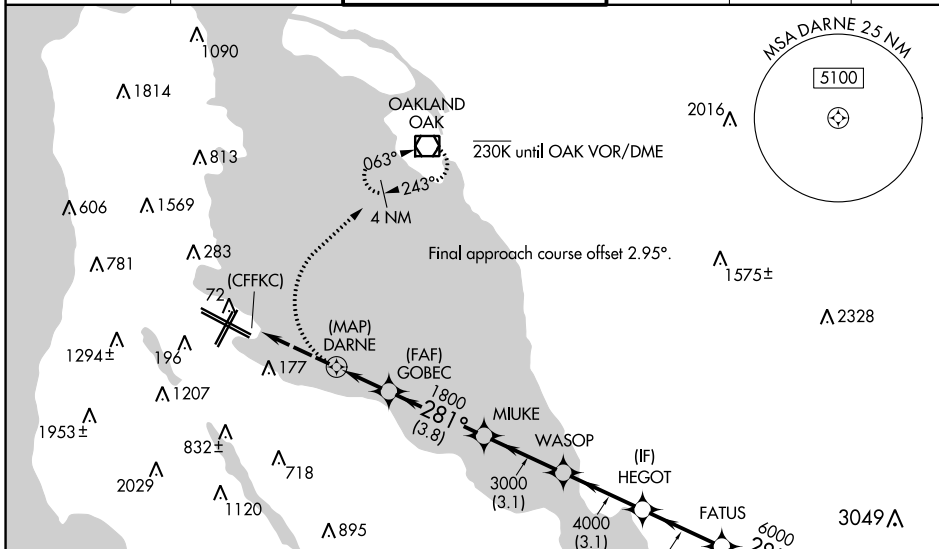
APP CRS	Rwy Idg	11236
281°	TDZE	13
	Apt Elev	13

RNAV (GPS) X RWY 28R

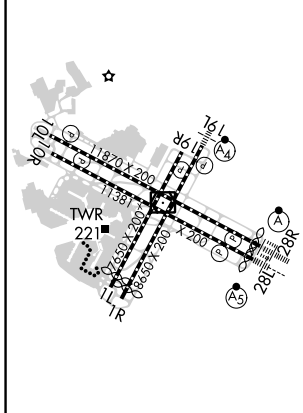
SAN FRANCISCO INTL (SFO)

<p>NA Runway 28L and 28R separated by 750 feet centerline to centerline. DME/DME RNP-0.3 NA. When executing a missed approach or go-around, unless otherwise instructed by ATC, initially turn right to 030° utilizing heading mode. Inoperative table does not apply. For uncompensated Baro-VNAV systems, LNAV/VNAV NA below 2°C (36°F) or above 54°C (130°F). *If a go-around executed after passing DARNE, go-around requires a minimum climb of 380 feet per NM to 1800.</p>	<p>ALSF-2</p> <p>MISSED APPROACH: Climbing right turn to 3000 on heading 030° then direct OAK VOR/DME and hold.</p>
---	--

D-ATIS 113.7 115.8 118.85	NORCAL APP CON 134.5 338.2	SAN FRANCISCO TOWER 120.5 269.1	GND CON 121.8	CLNC DEL 118.2	CPDLC
-------------------------------------	--------------------------------------	---	-------------------------	--------------------------	-------



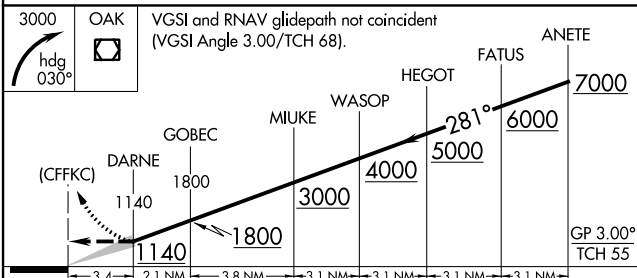
ELEV 13	D	TDZE 13
---------	----------	---------



TDZ/CL Rws 19L and 28R
 REIL Rws 1L, 1R, and 10L
 HIRL all Rws

RADAR REQUIRED

3000 OAK VGS1 and RNAV glidepath not coincident (VGS1 Angle 3.00/TCH 68).



CATEGORY	A	B	C	D
LNAV/VNAV DA*	1140-4	1127	11200-4	

SW-2, 21 MAR 2024 to 18 APR 2024

SW-2, 21 MAR 2024 to 18 APR 2024