

WAAS CH <b>57945</b> <b>W19D</b>	APP CRS <b>194°</b>	Rwy Idg TDZE Apt Elev	<b>7650</b> <b>11</b> <b>13</b>
--	------------------------	-----------------------------	---------------------------------------

# RNAV (GPS) Z RWY 19R

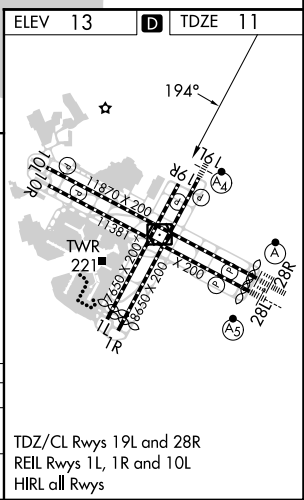
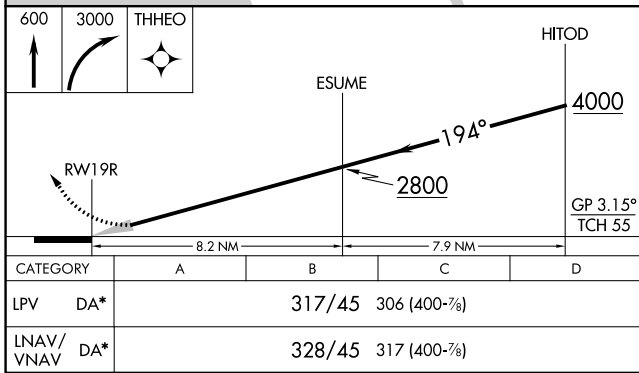
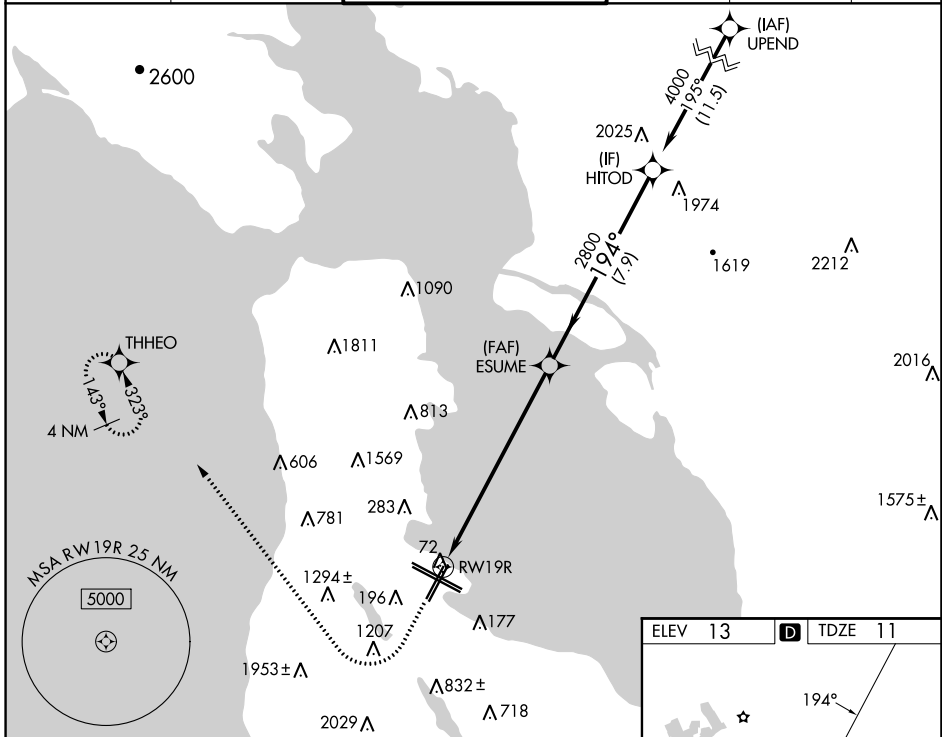
SAN FRANCISCO INTL (SFO)

RNP APCH - GPS.

Simultaneous approach authorized. Simultaneous operations require use of vertical guidance; maintain last assigned altitude until established on glidepath. For uncompensated Baro-VNAV systems, LNAV/VNAV NA below 4°C or above 54°C. Simultaneous approach NA below 12°C (52°F).

MISSED APPROACH: Climb to 600 then climbing right turn to 3000 direct THHEO and hold.  
 \*Missed approach requires minimum climb of 395 feet per NM to 2100; if unable to meet climb gradient, see RNAV (GPS) Y RWY 19R.

D-ATIS <b>113.7 115.8</b> <b>118.85</b>	NORCAL APP CON <b>134.5 338.2</b>	SAN FRANCISCO TOWER <b>120.5 269.1</b>	GND CON <b>121.8</b>	CLNC DEL <b>118.2</b>	CPDLC
---	--------------------------------------	---	-------------------------	--------------------------	-------



SW-2, 21 MAR 2024 to 18 APR 2024

SW-2, 21 MAR 2024 to 18 APR 2024

TDZ/CL Rwy 19L and 28R  
REIL Rwy 1L, 1R and 10L  
HIRL all Rwy