

SAN FRANCISCO FOUR DEPARTURE

AL-375 (FAA)

SAN FRANCISCO INTL (SFO)
SAN FRANCISCO, CALIFORNIA

**TOP ALTITUDE:
ASSIGNED BY ATC**

RED BLUFF
115.7 RBL :
Chan 104

D-ATIS
113.7 115.8 118.85
CPDLC
GND CON
121.8
SAN FRANCISCO TOWER
120.5 269.1
NORCAL DEP CON
120.9 323.2

TAKEOFF MINIMUMS

Rwys 1L/R: Standard.

Rwys 28L/R: Standard with a minimum climb of 351' per NM to 1300.

NOTE: RADAR required.

NOTE: Rwys 1L/R: DME required.

SACRAMENTO
115.2 SAC :
Chan 99

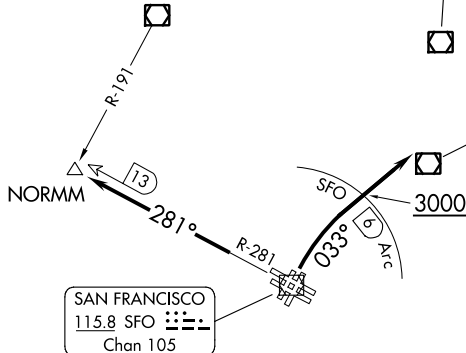
SAUSALITO
116.2 SAU :
Chan 109

CONCORD
117.0 CCR :
Chan 117

LINDEN
114.8 LIN :
Chan 95

OAKLAND
116.8 OAK :
Chan 115

SAN FRANCISCO
115.8 SFO :
Chan 105



NOTE: Chart not to scale.

DEPARTURE ROUTE DESCRIPTION

TAKEOFF RUNWAYS 1L/R: Climbing right turn heading 033° or ATC assigned heading to cross SFO 6 DME at or above 3000 for RADAR vectors to assigned route/fix. Expect further clearance to filed altitude 10 minutes after departure.

TAKEOFF RUNWAYS 28L/R: Climb on SFO VOR/DME R-281 to NORMM INT/SFO 13 DME; then expect RADAR vectors to assigned route/fix. Expect further clearance to filed altitude 10 minutes after departure.

LOST COMMUNICATIONS:

If not in contact with departure control after reaching 3000, continue climb to filed altitude and proceed direct to assigned route/fix.

SAN FRANCISCO FOUR DEPARTURE