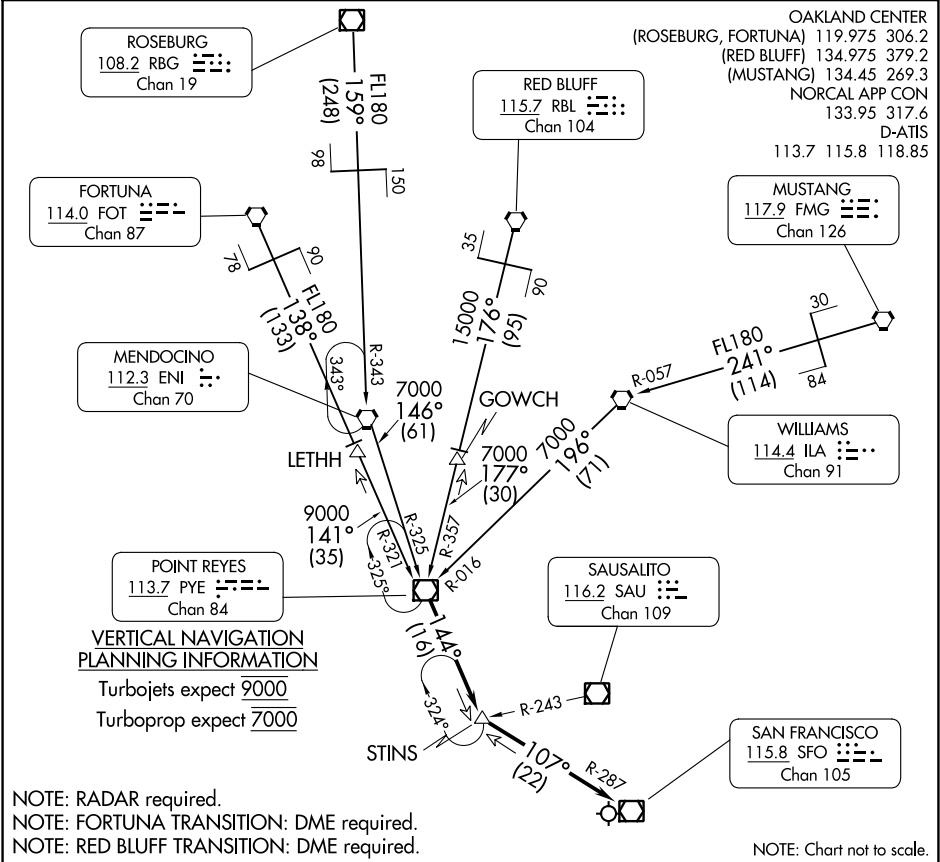


STINS FOUR ARRIVAL

AL-375 (FAA)

SAN FRANCISCO INTL (SFO)
SAN FRANCISCO, CALIFORNIA

OAKLAND CENTER
 (ROSEBURG, FORTUNA) 119.975 306.2
 (RED BLUFF) 134.975 379.2
 (MUSTANG) 134.45 269.3
 NORCAL APP CON
 133.95 317.6
 D-ATIS
 113.7 115.8 118.85



SW-2, 21 MAR 2024 to 18 APR 2024

SW-2, 21 MAR 2024 to 18 APR 2024

ARRIVAL ROUTE DESCRIPTION

FORTUNA TRANSITION (FOT.STINS4): From over FOT VORTAC on FOT R-138 and PYE R-321 to LETHH, then on PYE R-321 to PYE VOR/DME. Thence. . .

MENDOCINO TRANSITION (ENI.STINS4): From over ENI VORTAC on ENI R-146 and PYE R-325 to PYE VOR/DME. Thence. . .

MUSTANG TRANSITION (FMG.STINS4): From over FMG VORTAC on FMG R-241 and ILA R-057 to ILA VORTAC, then on ILA R-196 and PYE R-016 to PYE VOR/DME. Thence. . .

RED BLUFF TRANSITION (RBL.STINS4): From over RBL VORTAC on RBL R-176 and PYE R-357 to GOWCH, then on PYE R-357 to PYE VOR/DME. Thence. . .

ROSEBURG TRANSITION (RBG.STINS4): From over RBG VOR/DME on RBG R-159 and ENI R-343 to ENI VORTAC, then on ENI R-146 and PYE R-325 to PYE VOR/DME. Thence. . .

. . . From over PYE VOR/DME on PYE R-144 to STINS, then on SFO R-287 to SFO VOR/DME. Expect RADAR vectors to final approach course.