

(HOBOW3.HOBOW) 22251

HOBOW THREE DEPARTURE (RNAV)

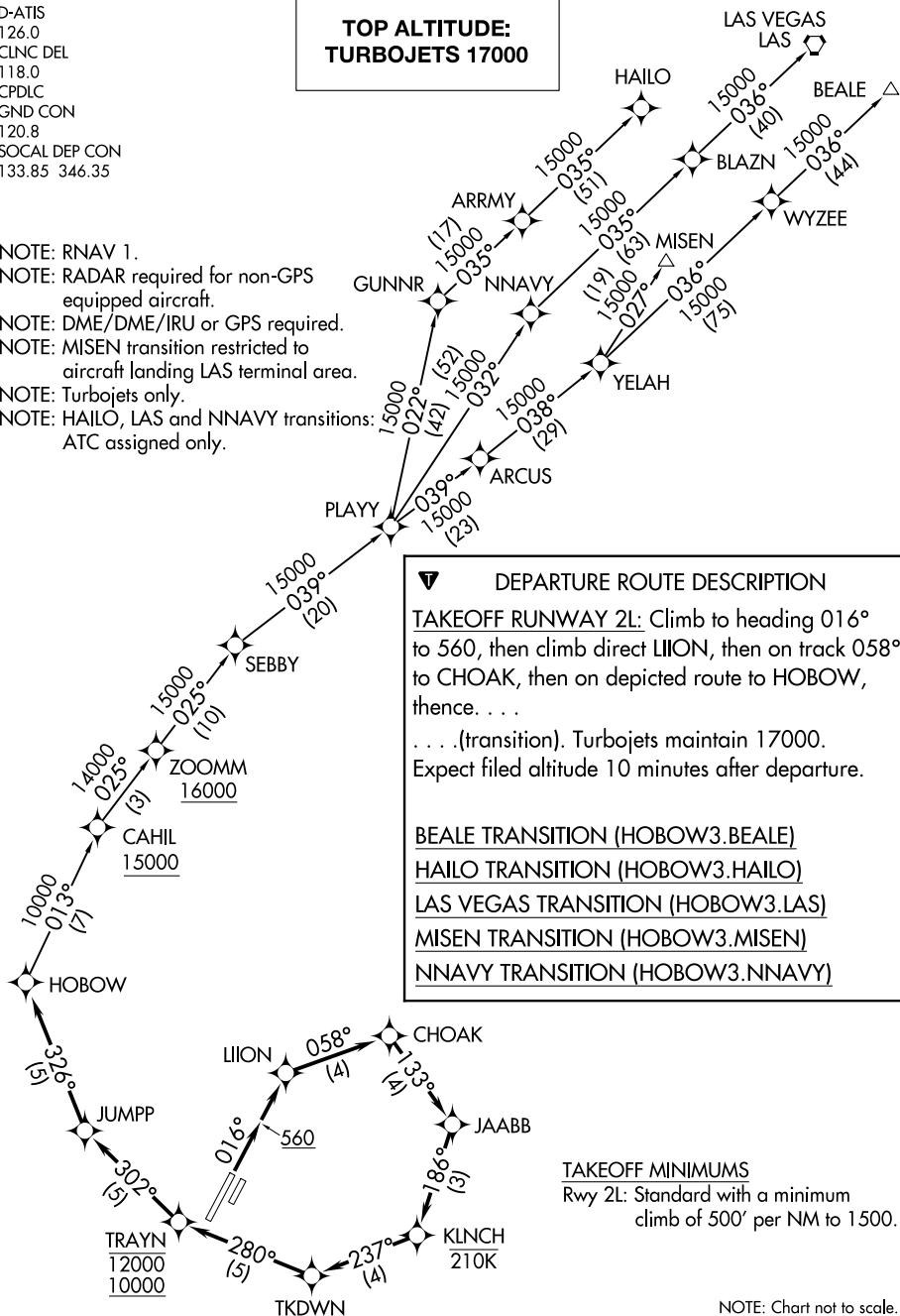
JOHN WAYNE/ORANGE COUNTY (SNA)

SANTA ANA, CALIFORNIA

D-ATIS
126.0
CLNC DEL
118.0
CPDLC
GND CON
120.8
SOCAL DEP CON
133.85 346.35

**TOP ALTITUDE:
TURBOJETTS 17000**

- NOTE: RNAV 1.
- NOTE: RADAR required for non-GPS equipped aircraft.
- NOTE: DME/DME/IRU or GPS required.
- NOTE: MISEN transition restricted to aircraft landing LAS terminal area.
- NOTE: Turbojets only.
- NOTE: HAILO, LAS and NNAVY transitions: ATC assigned only.



SW-3, 21 MAR 2024 to 18 APR 2024

SW-3, 21 MAR 2024 to 18 APR 2024

HOBOW THREE DEPARTURE (RNAV)

(HOBOW3.HOBOW) 10SEP20

SANTA ANA, CALIFORNIA
JOHN WAYNE/ORANGE COUNTY (SNA)