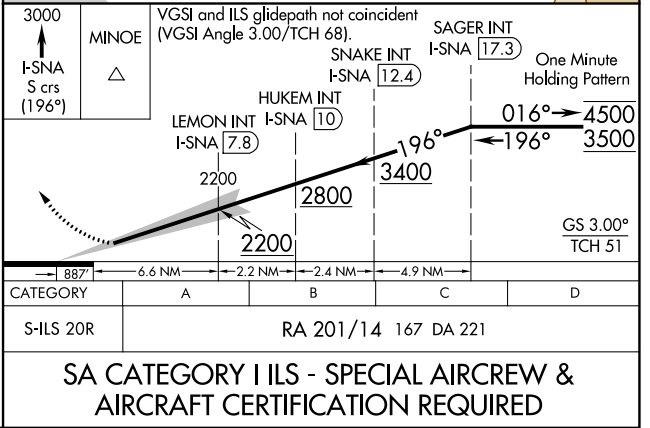
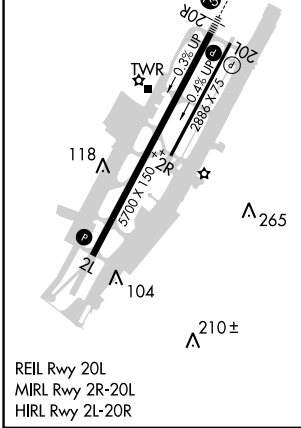
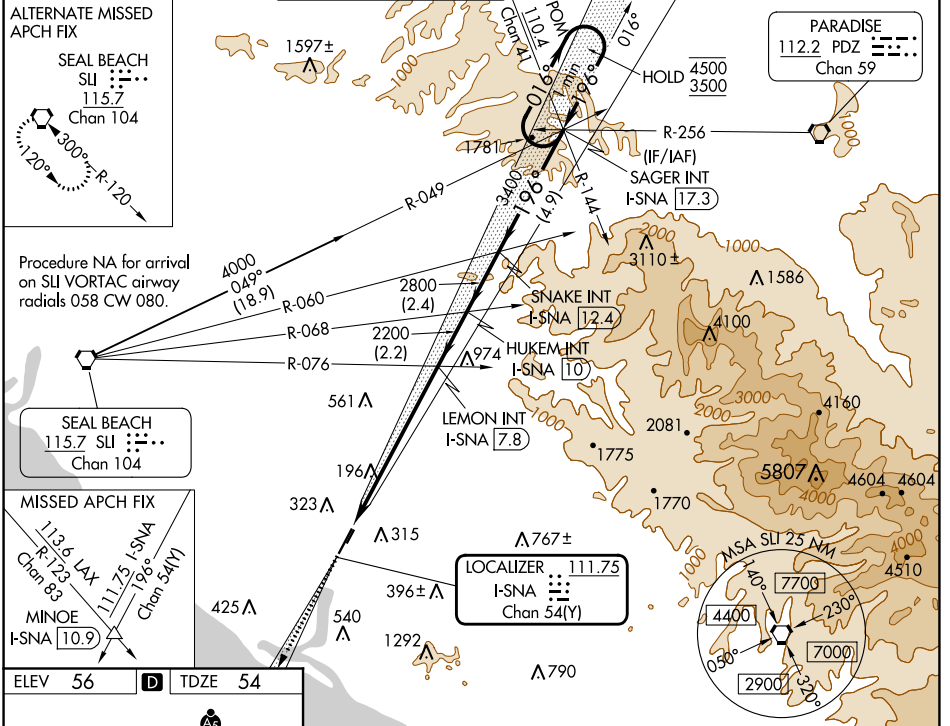


LOC/DME I-SNA <b>111.75</b> Chan <b>54(Y)</b>	APP CRS <b>196°</b>	Rwy Idg TDZE Apt Elev	<b>5700</b> <b>54</b> <b>56</b>
---	------------------------	-----------------------------	---------------------------------------

# ILS RWY 20R (SA CAT I)

JOHN WAYNE/ORANGE COUNTY (SNA)

Requires specific OPSPEC, MSPEC, or LOA approval. Procedure NA when tower closed.		MISSED APPROACH: Climb to 3000 on I-SNA LOC south course (196°) to MINOE INT/I-SNA 10.9 DME.				
		D-ATIS <b>126.0</b>	SOCAL APP CON <b>121.3 263.1</b>	<b>JOHN WAYNE TOWER *</b> <b>126.8 (CTAF) 343.625</b>	GND CON <b>120.8</b>	CLNC DEL <b>118.0</b>



SW-3, 21 MAR 2024 to 18 APR 2024

SW-3, 21 MAR 2024 to 18 APR 2024