

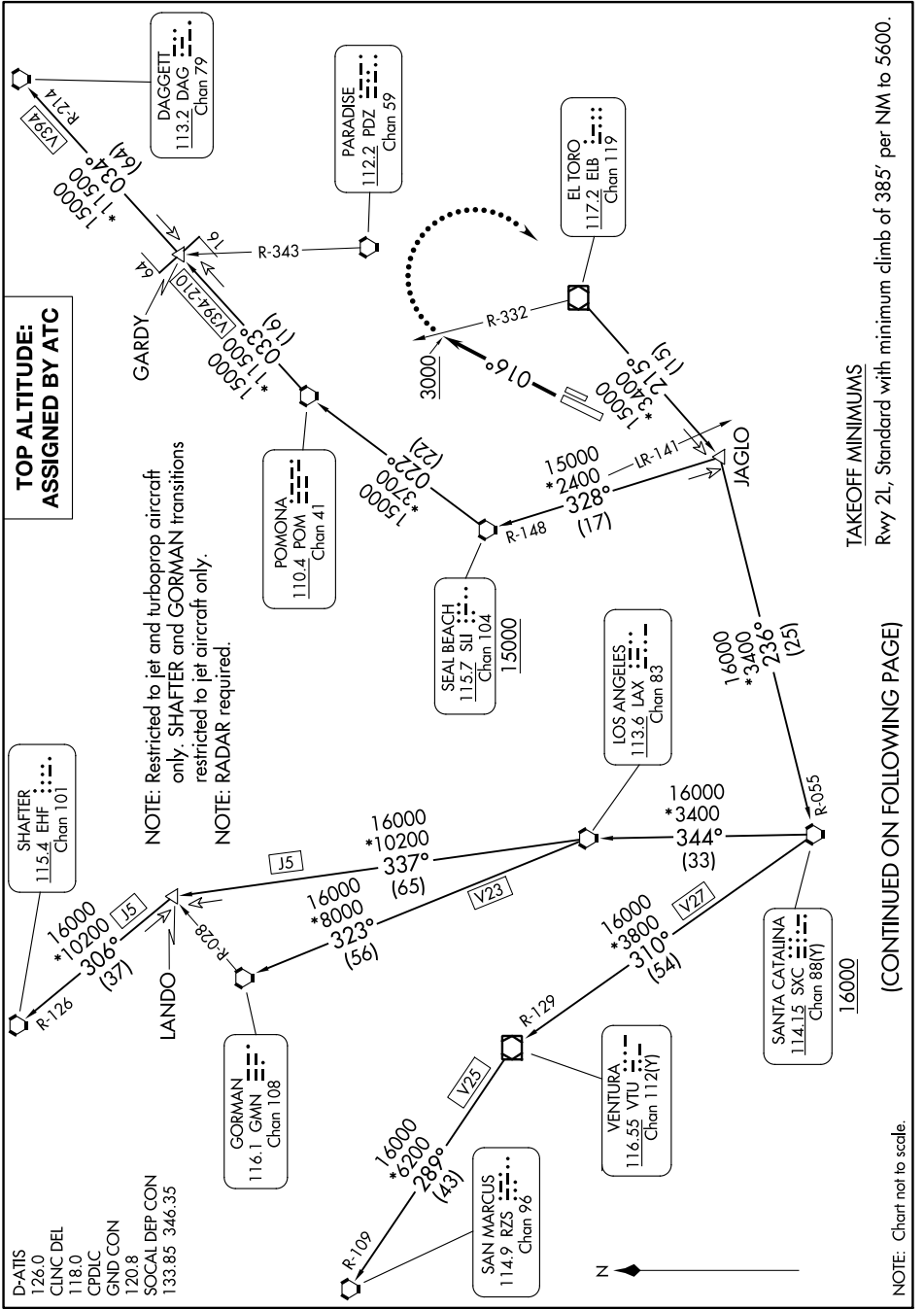
(IRV5.IRV) 23334

IRVINE FIVE DEPARTURE

AL-377 (FAA)

JOHN WAYNE/ORANGE COUNTY (SNA)
SANTA ANA, CALIFORNIA

SW-3, 21 MAR 2024 to 18 APR 2024



IRVINE FIVE DEPARTURE

(IRV5.IRV) 28FEB19

SANTA ANA, CALIFORNIA
JOHN WAYNE/ORANGE COUNTY (SNA)

TAKEOFF MINIMUMS
Rwy 2L, Standard with minimum climb of 385' per NM to 5600.

(CONTINUED ON FOLLOWING PAGE)

NOTE: Chart not to scale.

SW-3, 21 MAR 2024 to 18 APR 2024