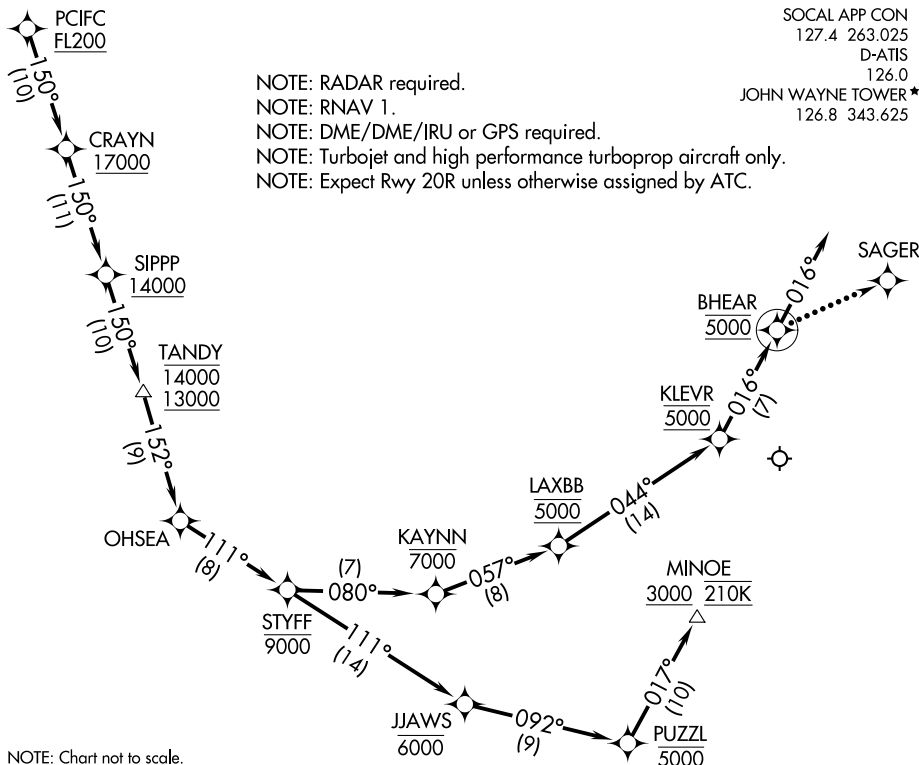


# OHSEA TWO ARRIVAL (RNAV) Arrival Routes

SANTA ANA, CALIFORNIA



NOTE: Chart not to scale.

## ARRIVAL ROUTE DESCRIPTION

From PCIFC on track 150° to cross CRAYN at or above 17000, then on track 150° to cross SIPPP at or above 14000, then on track 150° to cross TANDY between 13000 and 14000, then on track 152° to OHSEA.

LANDING RUNWAY 2L: From OHSEA on track 111° to cross STYFF at or below 9000, then on track 111° to cross JJAWS at or below 6000, then on track 092° to cross PUZZL at 5000, then on track 017° to cross MINOE at or above 3000 and at 210K. Expect RNAV (RNP) Z RWY 2L or vectors to final approach course.

LANDING RUNWAY 20R: From OHSEA on track 111° to cross STYFF at or below 9000, then on track 080° to cross KAYNN at or below 7000, then on track 057° to cross LAXBB at 5000, then on track 044° to cross KLEVR at 5000, then on track 016° to cross BHEAR at 5000, then on track 016°. Expect RNAV (RNP) Z RWY 20R or vectors to final approach course.

### LOST COMMUNICATIONS

LANDING RUNWAY 20R: After BHEAR turn right direct SAGER and proceed on the ILS or LOC RWY 20R approach.

LANDING RUNWAY 2L: Proceed on LOC BC RWY 2L, RNAV (GPS) Y RWY 2L or RNAV (RNP) Z RWY 2L.

SW-3, 21 MAR 2024 to 18 APR 2024

SW-3, 21 MAR 2024 to 18 APR 2024