

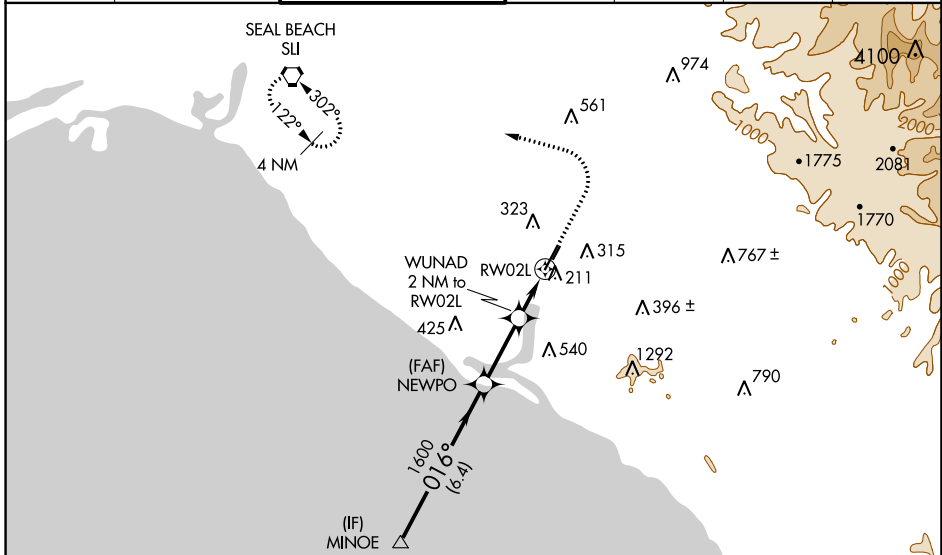
APP CRS	Rwy Idg	<b>5700</b>
<b>016°</b>	TDZE	<b>56</b>
	Apt Elev	<b>56</b>

# RNAV (GPS) Y RWY 2L

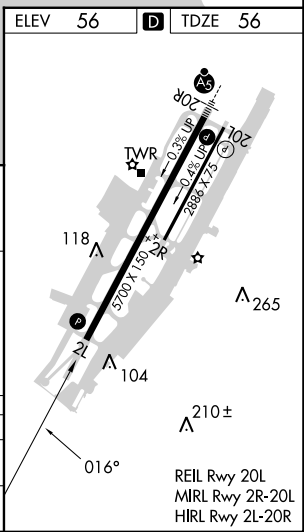
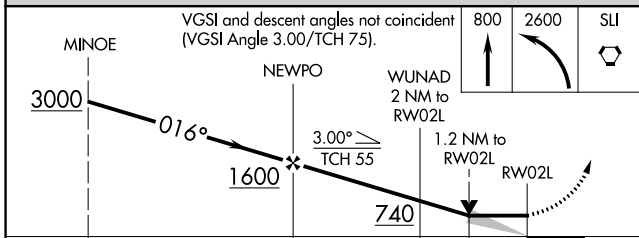
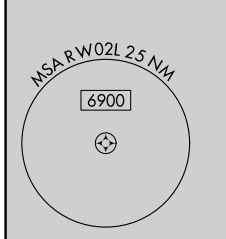
JOHN WAYNE/ORANGE COUNTY (SNA)

RNP APCH - GPS.		MISSED APPROACH: Climb to 800 then climbing left turn to 2600 direct SLI VORTAC and hold.				
Circling Rwy 20L NA at night.						

D-ATIS	SOCAL APP CON	JOHN WAYNE TOWER *	GND CON	CLNC DEL	CPDLC	UNICOM
<b>126.0</b>	<b>121.3 263.1</b>	<b>126.8 (CTAF) 0 343.625</b>	<b>120.8</b>	<b>118.0</b>		<b>122.95</b>



Procedure NA for arrivals at MINOE on V25 southeast bound.



CATEGORY	A	B	C	D
LNVA MDA	520-1 464 (500-1)		520-1 3/8 464 (500-1 3/8)	
CIRCLING	640-1 584 (600-1)		840-2 1/4 784 (800-2 1/4)	1160-3 1104 (1200-3)

SW-3, 21 MAR 2024 to 18 APR 2024

SW-3, 21 MAR 2024 to 18 APR 2024