

ZOOMR TWO ARRIVAL

AL-403 (FAA)

SPOKANE, WASHINGTON

NW-1, 21 MAR 2024 to 18 APR 2024

ARRIVAL ROUTE DESCRIPTION

EPHRATA TRANSITION (EPH.ZOOMR2): From over EPH VORTAC on EPH R-065 to ZOOMR. Thence, . . .

MOSES LAKE TRANSITION (MWH.ZOOMR2): From over MWH VOR/DME on MWH R-054 to ZOOMR. Thence, . . .

FAIRCHILD AFB: From over FAIRCHILD VORTAC (GEG) R-239 to GANGS. . . . From over ZOOMR on SPOKANE VORTAC (GEG) R-239 to GANGS. Expect RADAR vectors to final approach course.

LOST COMMUNICATIONS

After GANGS:

LANDING SPOKANE INTL or FELTS FLD: Proceed to GEG VORTAC on GEG R-239, maintain last assigned altitude to GEG.

LANDING FAIRCHILD AFB: Proceed to KNOCK DME fix direct, maintain last assigned altitude to KNOCK.

SPOKANE APP CON
123.75 282.25
GEG ATIS
124.325 254.375
KSKA ATIS
257.625
SFF ATIS
120.55

FAIRCHILD
Chan 51
SKA
(111.4)

FELTS FLD
SPOKANE INTL

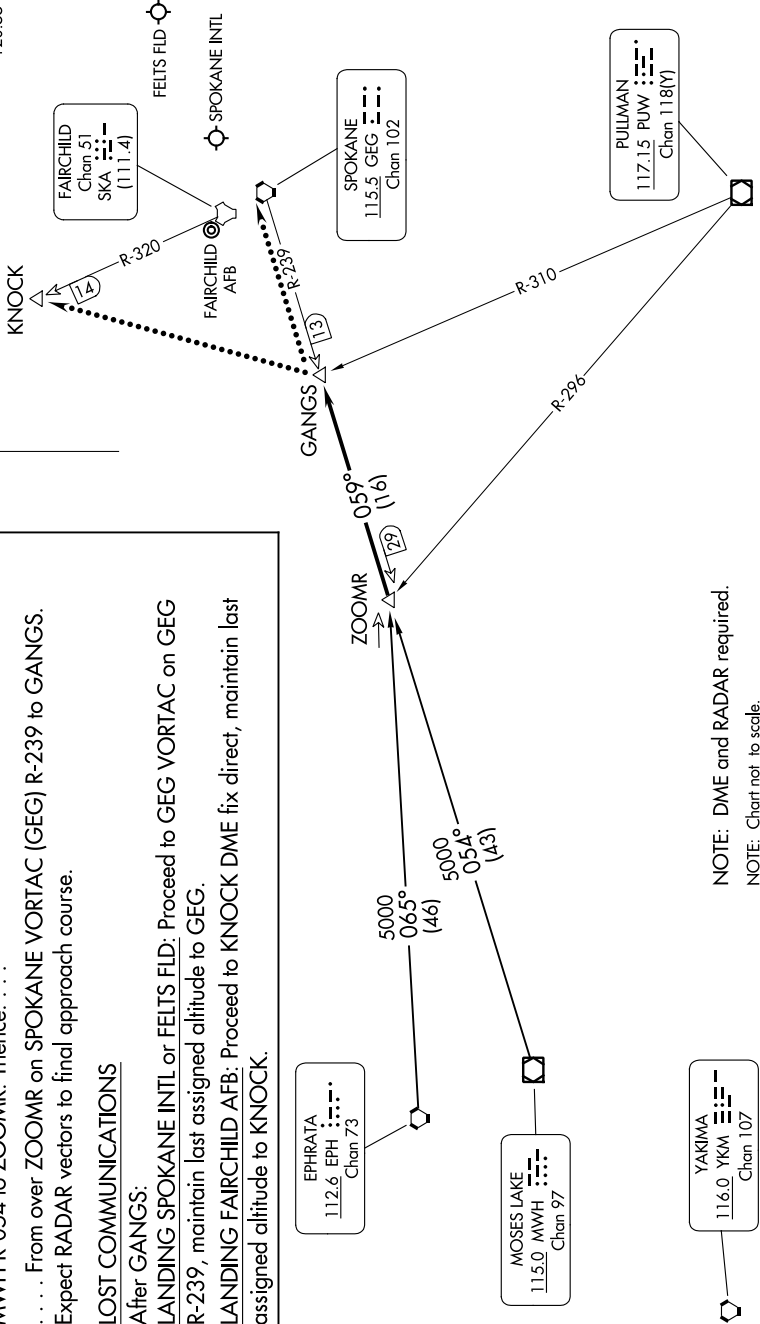
SPOKANE
115.5 GEG
Chan 102

PULLMAN
117.15 PUW
Chan 118(Y)

EPHRATA
112.6 EPH
Chan 73

MOSES LAKE
115.0 MWH
Chan 97

YAKIMA
116.0 YKM
Chan 107



NOTE: DME and RADAR required.

NOTE: Chart not to scale.

ZOOMR TWO ARRIVAL

SPOKANE, WASHINGTON

NW-1, 21 MAR 2024 to 18 APR 2024