

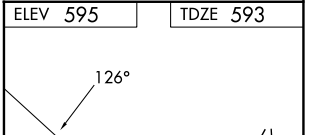
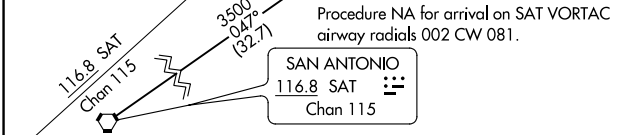
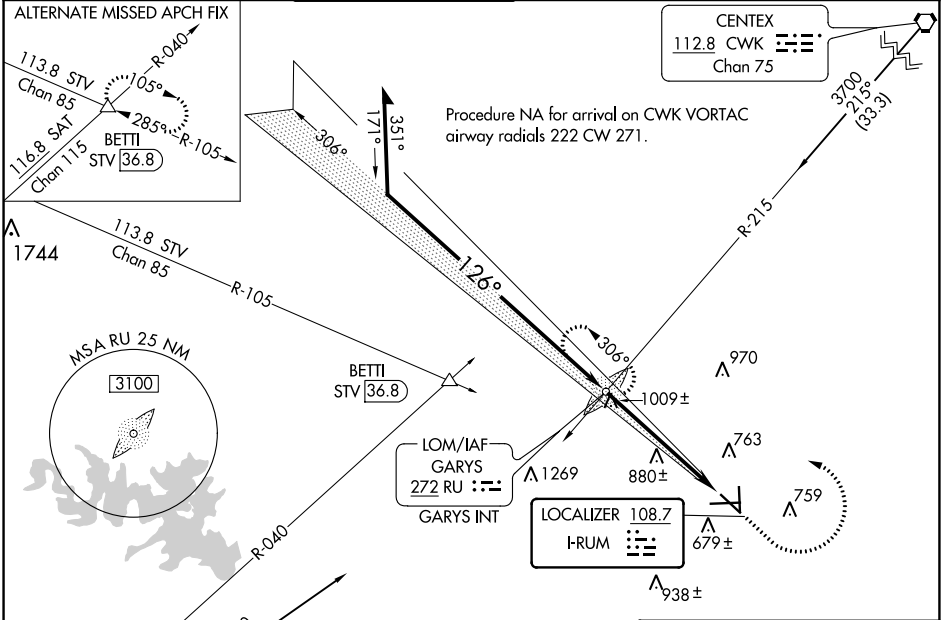
LOC I-RUM 108.7	APP CRS 126°	Rwy Idg TDZE Apt Elev	5601 593 595
---------------------------	------------------------	-----------------------------	---

ILS or LOC RWY 13

SAN MARCOS RGNL (HYI)

ADF required.	MALS 	MISSED APPROACH: Climb to 2000 then climbing left turn to 3200 direct GARYS LOM/INT and hold.
Circling NA for Cat E southwest of Rwy 13-31. Inop table does not apply to S-ILS 13 all Cats. For inop ALS, increase S-LOC 13 Cat C/D/E visibility to 1/8 SM.		

ATIS ★ 120.825	AUSTIN APP CON 119.0 370.85	SAN MARCOS TOWER ★ 126.825 (CTAF)	GND CON 120.125	CLNC DEL 120.125	CLNC DEL 121.35 (when twr closed)
--------------------------	---------------------------------------	---	---------------------------	----------------------------	--



CATEGORY	A	B	C	D	E	MIRL Rwy 8-26, 13-31, and 17-35
	S-ILS-13	793-3/4 200 (200-3/4)				
S-LOC-13	1260-3/4 667 (700-3/4)	1260-13/4 667 (700-13/4)				
CIRCLING	1260-1 665 (700-1)	1260-17/8 665 (700-17/8)	1320-21/4 725 (800-21/4)	1340-23/4 745 (800-23/4)		Knots 60 90 120 150 180
						Min:Sec 5:30 3:40 2:45 2:12 1:50

SC-3, 21 MAR 2024 to 18 APR 2024

SC-3, 21 MAR 2024 to 18 APR 2024