

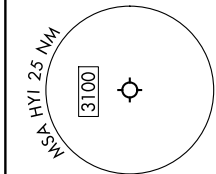
ILEXY FOUR DEPARTURE (RNAV)

SC-3, 21 MAR 2024 to 18 APR 2024

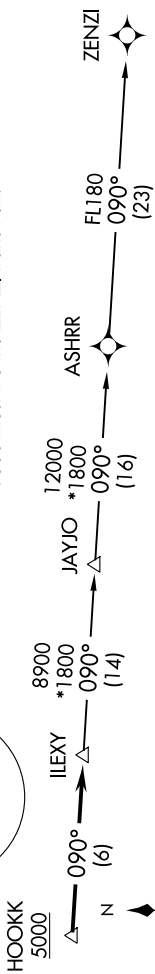
**TOP ALTITUDE:
ASSIGNED BY ATC**

RNAV 1 - DME/DME/IRU or GPS.
RADAR required.

NOTE: Houston terminal area arrivals expect routing from ILEXY.
NOTE: JAYJO transition to join V306 only.
NOTE: Aircraft not destined the Houston terminal area or joining V306 must file the ZENZI transition.



- ATIS * 120.825
- CLNC DEL 120.125
- CLNC DEL (when hvr closed) 121.35
- GND CON 120.125
- SAN MARCOS TOWER * 126.825
- AUSTIN DEP CON 119.0 370.85



TAKEOFF MINIMUMS

Rwys 8, 13, 17, 26: Standard.
Rwy 31: Standard with minimum climb of 210' per NM to 2600.
Rwy 35: Standard with minimum climb of 230' per NM to 2600.

NOTE: Chart not to scale.

DEPARTURE ROUTE DESCRIPTION

- TAKEOFF RUNWAY 8:** Climb on heading 081° or as assigned by ATC for vectors to cross HOOKK at or above 5000, thence. . . .
 - TAKEOFF RUNWAY 13:** Climb on heading 126° or as assigned by ATC for vectors to cross HOOKK at or above 5000, thence. . . .
 - TAKEOFF RUNWAY 17:** Climb on heading 171° or as assigned by ATC for vectors to cross HOOKK at or above 5000, thence. . . .
 - TAKEOFF RUNWAY 26:** Climb on heading 261° or as assigned by ATC for vectors to cross HOOKK at or above 5000, thence. . . .
 - TAKEOFF RUNWAY 31:** Climb on heading 306° or as assigned by ATC for vectors to cross HOOKK at or above 5000, thence. . . .
 - TAKEOFF RUNWAY 35:** Climb on heading 351° or as assigned by ATC for vectors to cross HOOKK at or above 5000, thence. . . .
- on track 090° to ILEXY, then on transition. Maintain altitude assigned by ATC. Expect filed altitude 10 minutes after departure.

JAYJO TRANSITION (ILEXY4.JAYJO)
ZENZI TRANSITION (ILEXY4.ZENZI)

ILEXY FOUR DEPARTURE (RNAV)

(ILEXY4.ILEXY) 15JUN23

SC-3, 21 MAR 2024 to 18 APR 2024