

WAAS CH <b>72932</b> <b>W08A</b>	APP CRS <b>081°</b>	Rwy Idg <b>6330</b> TDZE <b>589</b> Apt Elev <b>595</b>
--	------------------------	---

# RNAV (GPS) RWY 8

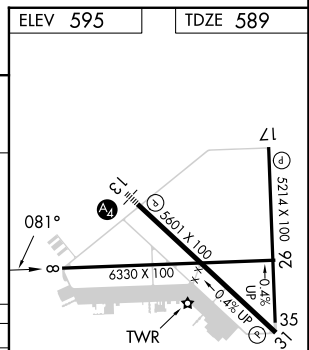
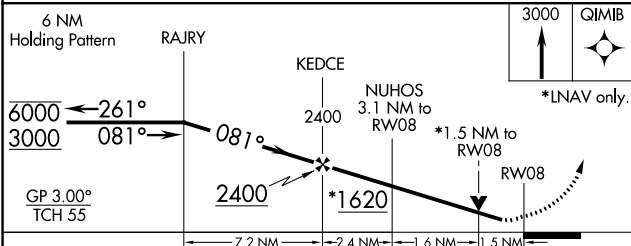
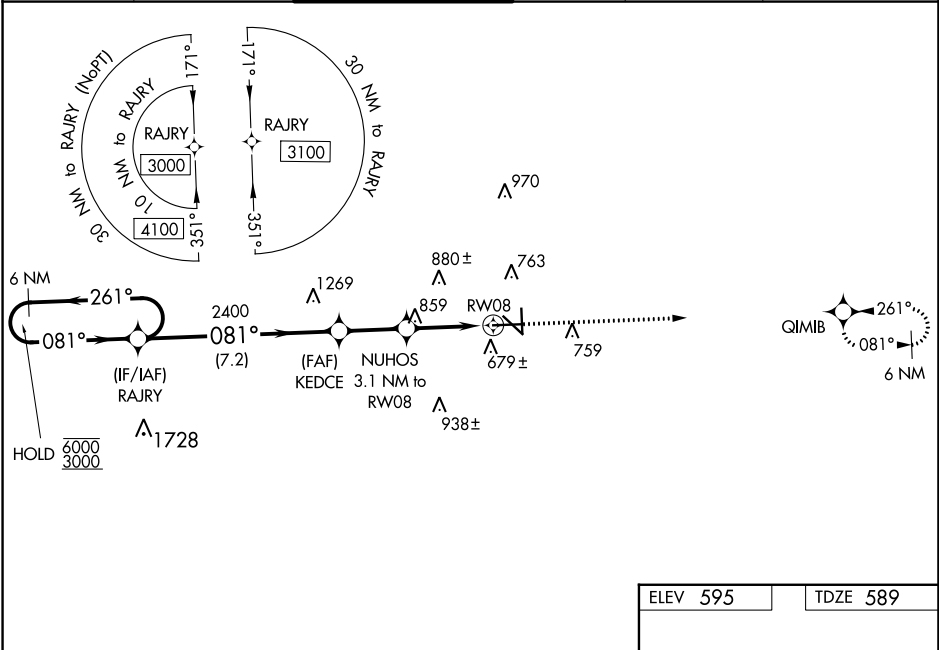
SAN MARCOS RGNL (HYI)

RNP APCH.

**⚠** Circling NA for Cat E SW of Rwy 13-31; Rwy 8 helicopter visibility reduction below 3/4 SM NA. Baro-VNAV NA when using New Braunfels altimeter setting. For uncompensated Baro-VNAV systems, LNAV/VNAV NA below -16°C or above 54°C. VDP NA with New Braunfels altimeter setting. When local altimeter setting not received, use New Braunfels altimeter setting and increase LPV DA to 882, LNAV/VNAV DA to 953 and increase all MDA 60 feet; increase LNAV Cat C/D/E and Circling Cat C/D visibility 1/4 SM.

MISSED APPROACH:  
Climb to 3000 direct  
QIMIB and hold.

ATIS ★ <b>120.825</b>	AUSTIN APP CON <b>119.0 370.85</b>	SAN MARCOS TOWER★ <b>126.825</b> (CTAF) <b>0</b>	GND CON <b>120.125</b>	CLNC DEL <b>120.125</b>	CLNC DEL <b>121.35</b> (when twr closed)
--------------------------	---------------------------------------	---	---------------------------	----------------------------	--



CATEGORY	A	B	C	D	E
LPV DA	839-1		250 (300-1)		
LNAV/VNAV DA	910-1		321 (400-1)		
LNAV MDA	1120-1	531 (600-1)	1120-1½		531 (600-1½)
<b>C</b> CIRCLING	1120-1	525 (600-1)	1240-1¾ 645 (700-1¾)	1320-2¼ 725 (800-2¼)	1340-2¾ 745 (800-2¾)

MIRL Rwy 8-26, 13-31, and 17-35 **0**

SC-3, 21 MAR 2024 to 18 APR 2024

SC-3, 21 MAR 2024 to 18 APR 2024