

LOC/DME I-MPV 108.7 Chan 24	APP CRS 168°	Rwy Idg TDZE Apt Elev	5000 1135 1166
--	------------------------	-----------------------------	---

ILS or LOC RWY 17

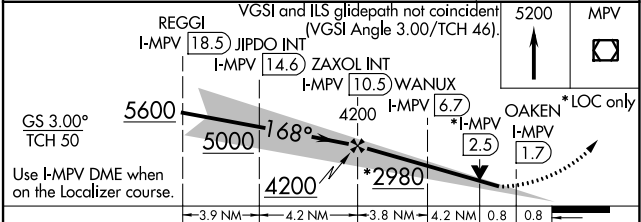
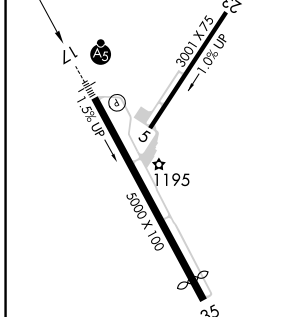
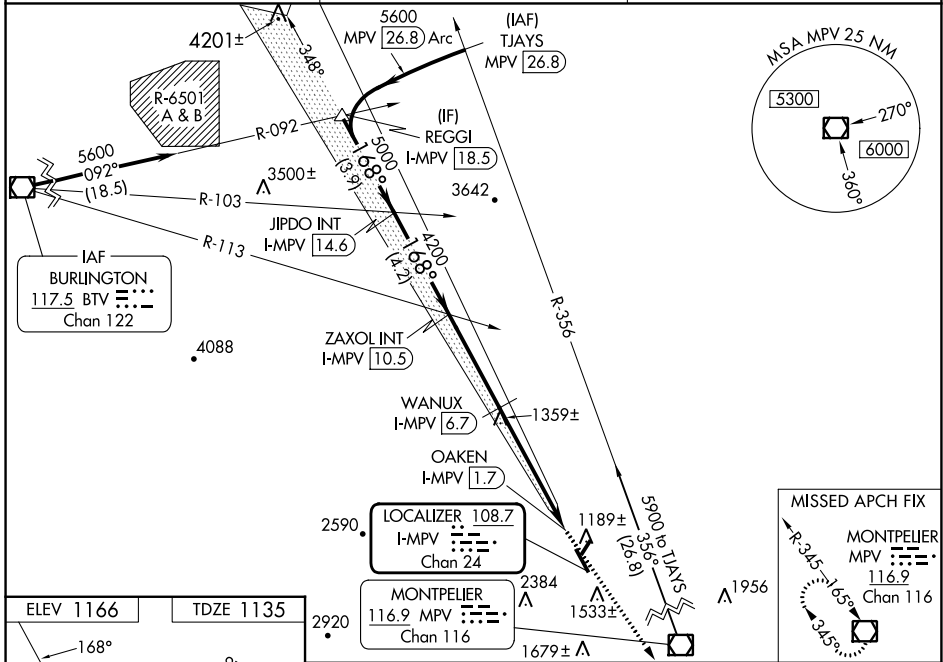
EDWARD F KNAPP STATE (MPV)

⚠ Inoperative table does not apply to S-LOC 17 Cats A and B. When local altimeter setting not received, procedure NA. Rwy 17 helicopter visibility reduction below 3/4 SM NA. Circling Rwy 5, 35 NA at night. For inoperative MALSR, increase S-ILS 17 all Cats visibility to 1 1/8 mile and WANUX fix minimums S-LOC 17 Cats A/B visibility to 1 mile and Cats C/D visibility to 1 1/8 mile.

MALSR

MISSED APPROACH: Climb to 5200 direct MPV VOR/DME and hold, continue climb-hold to 5200.

ASOS 132.675	BOSTON CENTER 135.7 282.2	UNICOM 122.8 (CTAF)
------------------------	-------------------------------------	-------------------------------



CATEGORY	A	B	C	D
S-ILS 17	1486-3/4 351 (400-3/4)			
S-LOC 17	2980-1 1/4 1845 (1900-1 1/4)	2980-1 1/2 1845 (1900-1 1/2)	2980-3	1845 (1900-3)
C CIRCLING	2980-1 1/4 1814 (1900-1 1/4)	2980-1 1/2 1814 (1900-1 1/2)	2980-3	1814 (1900-3)
WANUX FIX MINIMUMS				
S-LOC 17	1660-3/4	525 (500-3/4)	1660-1 1/4	525 (500-1 1/4)
C CIRCLING	1980-1 1/4	814 (900-1 1/4)	2700-3 1534 (1600-3)	2920-3 1754 (1800-3)

NE-1, 21 MAR 2024 to 18 APR 2024

NE-1, 21 MAR 2024 to 18 APR 2024