

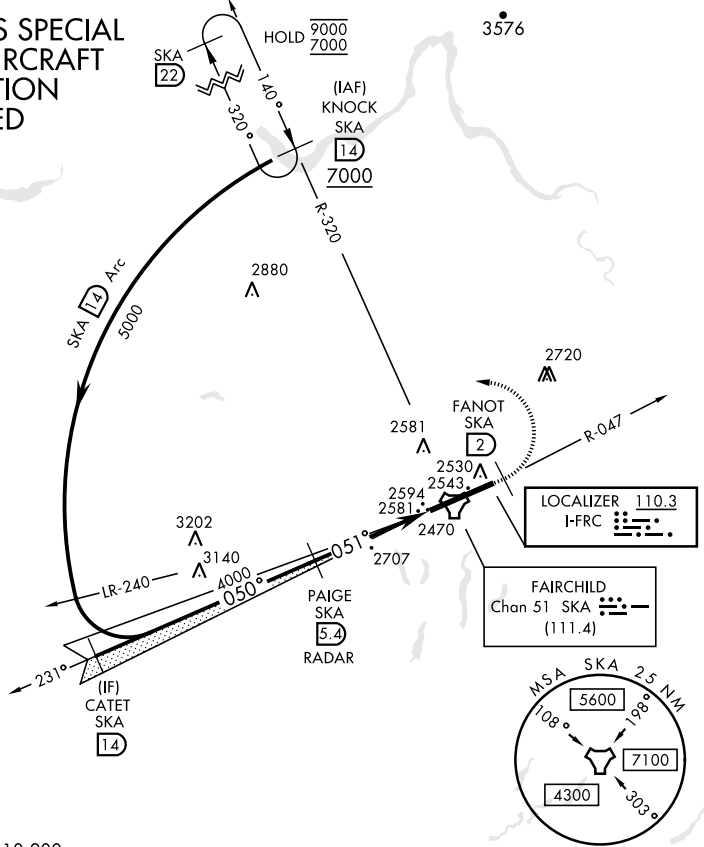
SPOKANE, WASHINGTON

ILS RWY 5 (CAT II)

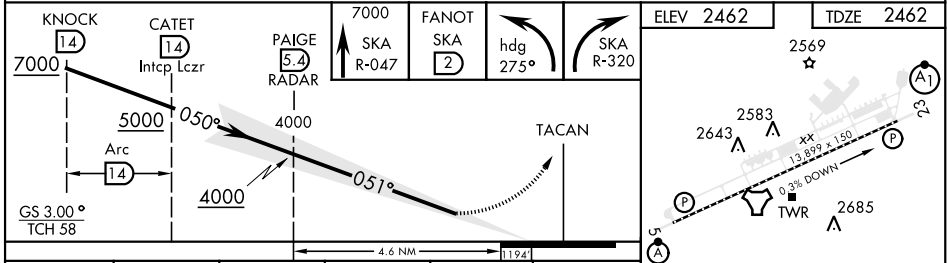
LOC I-FRC 110.3	APCH CRS 051°	Rwy Idg 13,899 TDZE 2462 Arpt Elev 2462	AL-553 [USAF]	FAIRCHILD AFB (KSKA)
RADAR required for KNOCK holding.			ALSF-2	MISSED APPROACH: Climb to 7000 via SKA TACAN R-047. At FANOT turn left hdg 275° to intcp SKA R-320 to KNOCK and hold, continue climb in hold to 7000.

ATIS 257.625	SPOKANE APP CON 123.75 282.25 (208° - 028°) 133.35 263.0 (029° - 207°)	TOWER 120.35 233.7	GND CON 123.6 275.8
------------------------	--	------------------------------	-------------------------------

CATEGORY II ILS SPECIAL AIRCREW & AIRCRAFT CERTIFICATION REQUIRED



EMERG SAFE ALT 100 NM 10,900



ELEV 2462	TDZE 2462				
CATEGORY	A	B	C	D	E
S-ILS 5	RA 98/12		100	DA 2562	
HIRL Rwy 5-23			TDZL/CL Rwy 5		

SPOKANE, WASHINGTON 47°37'N-117°39'W FAIRCHILD AFB (KSKA)

Amtd 2 03NOV22

ILS RWY 5 (CAT II)

NW-1, 21 MAR 2024 to 18 APR 2024

NW-1, 21 MAR 2024 to 18 APR 2024