

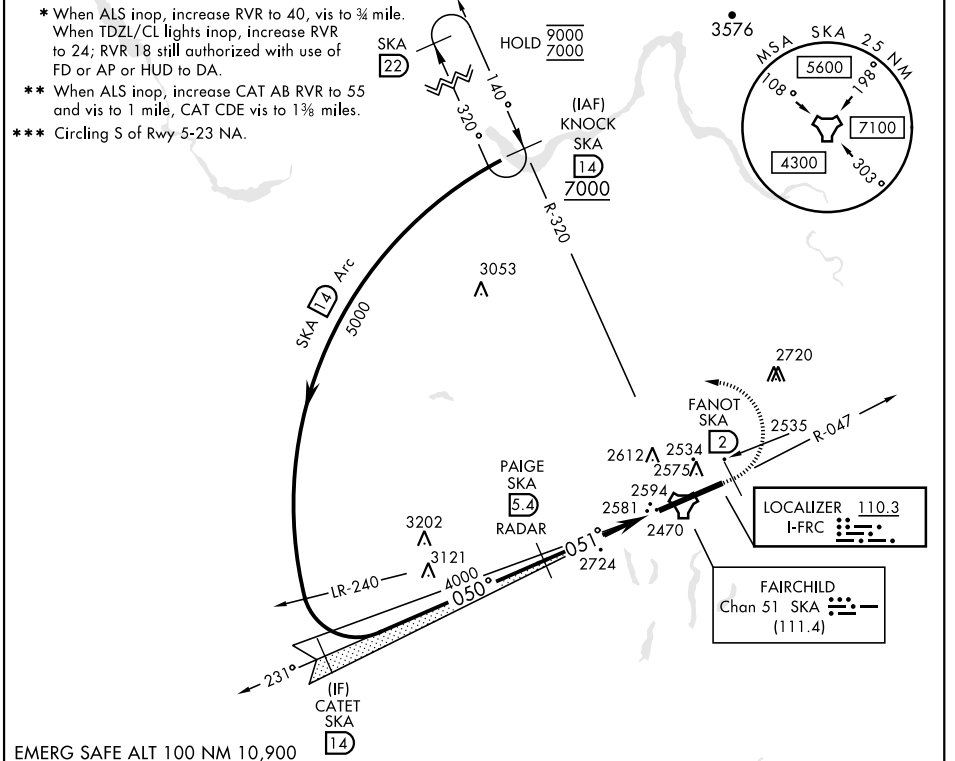
SPOKANE, WASHINGTON

# ILS or LOC RWY 5

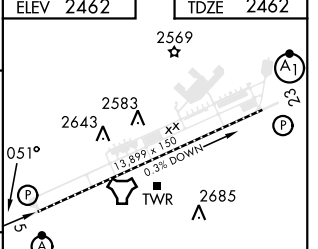
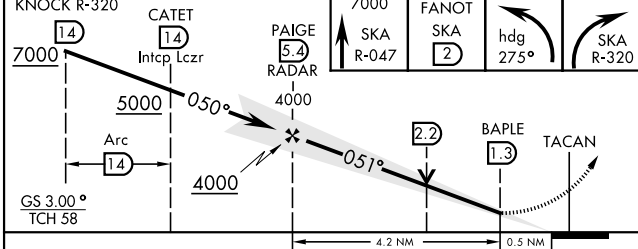
LOC I-FRC <b>110.3</b>	APCH CRS <b>051°</b>	Rwy Idg <b>13,899</b> TDZE <b>2462</b> Arpt Elev <b>2462</b>	AL-553 [USAF]	FAIRCHILD AFB (KSKA)
---------------------------	-------------------------	--------------------------------------------------------------------	---------------	----------------------

DME or RADAR reqrd for LOC. RADAR reqrd for KNOCK holding. ALSF-2 MISSED APPROACH: Climb to 7000 via SKA TACAN R-047. At FANOT turn left hdg 275° to intcp SKA R-320 to KNOCK and hold, cont climb in hold to 7000.

ATIS <b>257.625</b>	SPOKANE APP CON <b>123.75 282.25 263.0</b> (208° - 028°) (029° - 207°)	TOWER <b>120.35 233.7</b>	GND CON <b>123.6 275.8</b>
------------------------	---------------------------------------------------------------------------------	------------------------------	-------------------------------



EMERG SAFE ALT 100 NM 10,900



KNOCK R-320	CATET	PAIGE	7000	FANOT	ELEV 2462	TDZE 2462
7000	Intcp Lcwr	RADAR	SKA R-047	SKA	hdg 275°	SKA R-320
5000	050°	4000	051°	BAPLE	TACAN	2569
Arc	14	4000	051°	1.3	13 899 x 150	0.3% DOWN
GS 3.00°						2685
TCH 58						
			4.2 NM	0.5 NM		
CATEGORY	A	B	C	D	E	
S-ILS 5 *	2662/18		200	(200-1/2)		HIRL Rwy 5-23
S-LOC 5 **	2960/24 498 (500-1/2)		2960/50 498 (500-1)		TDZL/CL Rwy 5	
***	2960-1 498 (500-1)		3040-1 1/2	3040-2	3600-3	FAF to MAP 4.2 NM
CIRCLING	2960-1 498 (500-1)		578 (600-1 1/2)	578 (600-2)	1138 (1200-3)	Knots 60 90 120 150 180
						Min:Sec 4:12 2:48 2:06 1:41 1:24

SPOKANE, WASHINGTON 47°37'N-117°39'W FAIRCHILD AFB (KSKA)

Amtd 6 03NOV22

# ILS or LOC RWY 5

NW-1, 21 MAR 2024 to 18 APR 2024

NW-1, 21 MAR 2024 to 18 APR 2024