

SPOKANE, WASHINGTON

RNAV (GPS) RWY 23

APCH CRS	Rwy Idg	13,899
231°	TDZE	2423
	Arprt Elev	2462

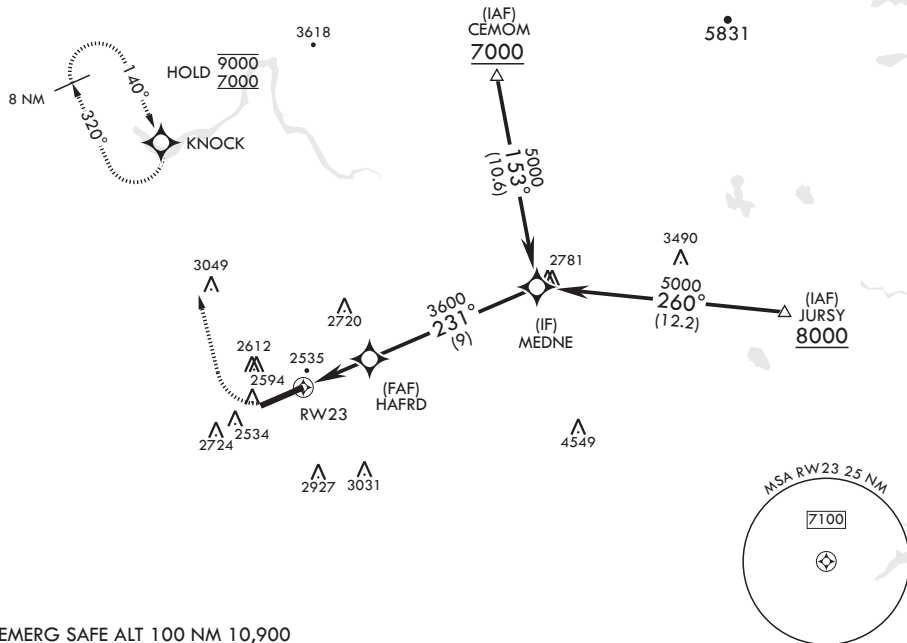
AL-553 (USAF)

FAIRCHILD AFB (KSKA)

RNP APCH	ALSIF-1	MISSED APPROACH: Climb to 3000, then climbing right turn to 7000 direct to KNOCK and hold, continue climb in hold to 7000.
RADAR required for KNOCK holding.		
* When ALS inop, increase CAT A8 RVR to 55 and vis to 1 mile, CAT CDE vis to 1 1/4 miles.		

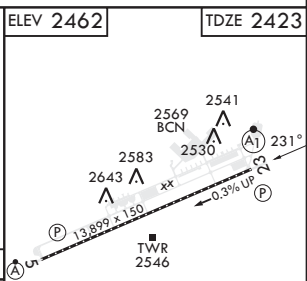
ATIS 257.625	SPOKANE APP CON 123.75 282.25 (208°-028°) 133.35 263.0 (029°-207°)	TOWER 120.35 233.7	GND CON 123.6 275.8
------------------------	--	------------------------------	-------------------------------

** Circling S of Rwy 5-23 NA.



EMERG SAFE ALT 100 NM 10,900

3000 crs 231°	7000 KNOCK	MEDNE 5000			
RW23 1.1 NM to RW23 ≤ 3.00° TCH 56		HAFRD 3600		3.5 NM	
CATEGORY	A	B	C	D	E
LNAV MDA*	2820/24	397 (400-½)	2820/35	397	(400-¾)
CIRCLING**	2900-1 438 (500-1)	2920-1 458 (500-1)	3040-1½ 578 (600-1½)	3040-2 578 (600-2)	3600-3 1138 (1200-3)
HIRL all Rwys TDZL/CL Rwy 5					



NW-1, 21 MAR 2024 to 18 APR 2024

NW-1, 21 MAR 2024 to 18 APR 2024

SPOKANE, WASHINGTON
Amdt D 03NOV22

47°37'N - 117°39'W

FAIRCHILD AFB (KSKA)

RNAV (GPS) RWY 23