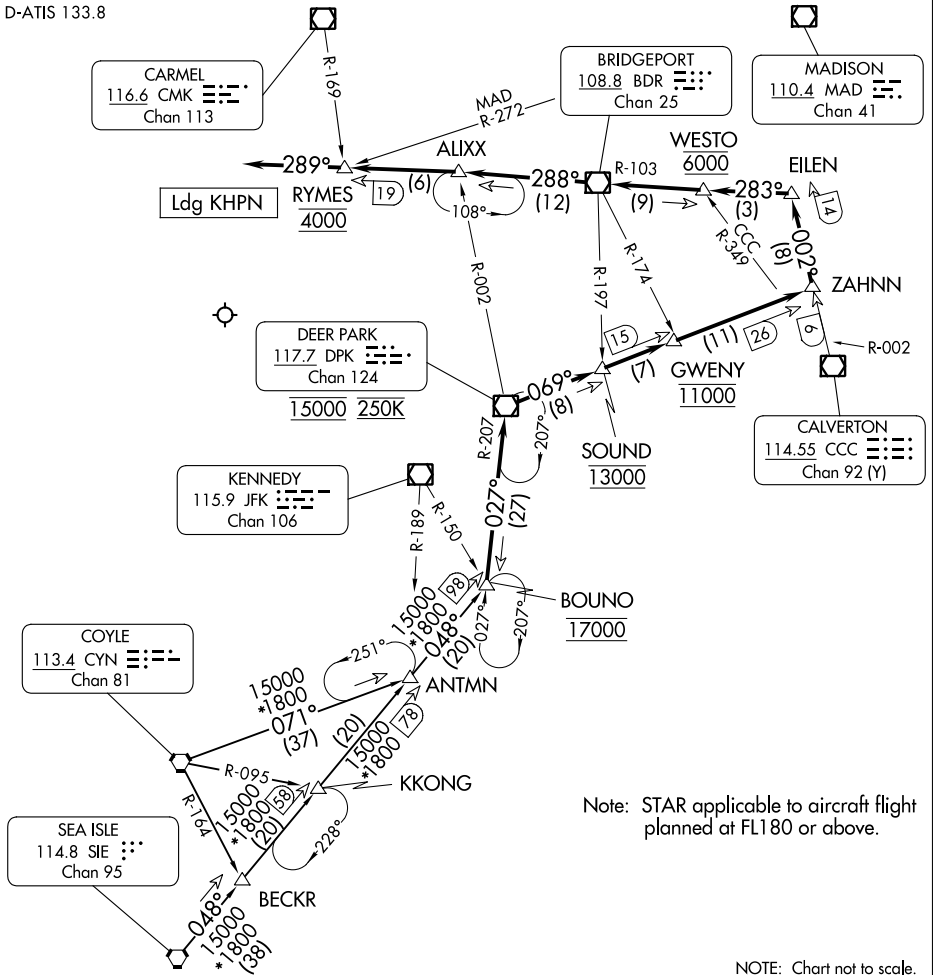


BOUNO FIVE ARRIVAL

RADAR required.

NEW YORK APP CON
124.075 133.1 343.75
D-ATIS 133.8



Note: STAR applicable to aircraft flight planned at FL180 or above.

NOTE: Chart not to scale.

ARRIVAL ROUTE DESCRIPTION

COYLE TRANSITION (CYN.BOUNO5): From over CYN VORTAC on CYN R-071 to ANTMN, then on SIE R-048 to BOUNO. Thence . . .

SEA ISLE TRANSITION (SIE.BOUNO5): From over SIE VORTAC on SIE R-048 to BOUNO. Thence . . .

. . . from BOUNO on DPK VOR/DME R-207 to cross DPK at 15000 and at 250K, then on DPK R-069 to cross SOUND at 13000, then on DPK R-069 to cross GWENY at 11000, then on DPK R-069 to ZAHNN, then on CCC VOR/DME R-002 to EILEN, then on BDR VOR/DME R-103 to cross WESTO at 6000, then BDR R-103 to BDR, then on BDR R-288 to ALIXX, then on BDR R-288 to cross RYMES at 4000, then on heading 289°. Expect radar vectors to final approach course.

BOUNO FIVE ARRIVAL