

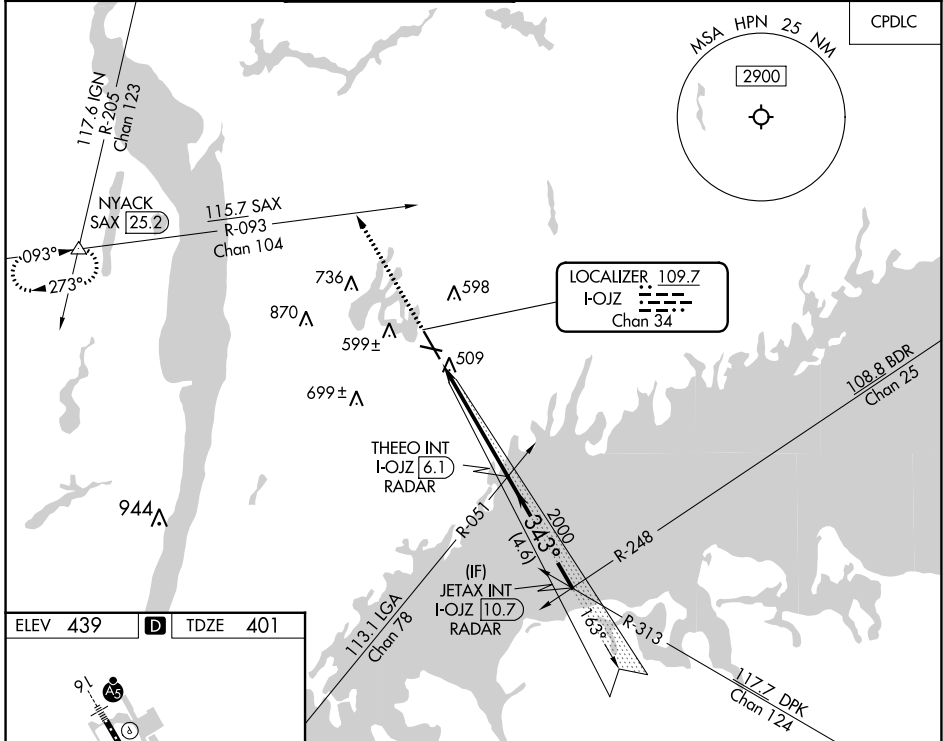
LOC/DME I-OJZ <b>109.7</b> Chan 34	APP CRS <b>343°</b>	Rwy Idg <b>6549</b> TDZE <b>401</b> Apt Elev <b>439</b>
--	------------------------	---

# ILS or LOC RWY 34

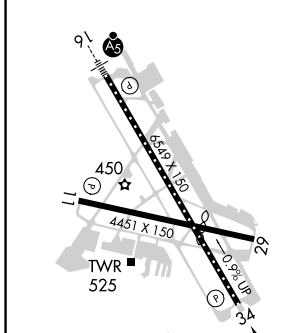
WESTCHESTER COUNTY (HPN)

RADAR required for procedure entry.		MISSED APPROACH: Climb to 3000 on heading 343° and SAX R-093 to NYACK INT/SAX 25.2 DME and hold.				
<p><b>▼</b> Circling Rwy 11, 29 NA at night.</p> <p><b>▲</b> Rwy 34 helicopter visibility reduction below ¾ SM NA.</p>						

D-ATIS <b>133.8</b>	NEW YORK APP CON <b>120.8 126.4 257.65</b>	WESTCHESTER TOWER ★ <b>118.575 (CTAF) 284.65</b>	GND CON <b>121.825</b>	CLNC DEL <b>127.25</b>	CLNC DEL <b>126.4</b> (when twr closed)	UNICOM <b>122.95</b>
------------------------	---	---	---------------------------	---------------------------	---	-------------------------



ELEV <b>439</b>	<b>D</b>	TDZE <b>401</b>
-----------------	----------	-----------------



REIL Rwys 11 and 34

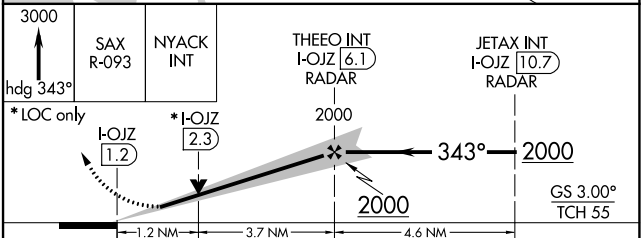
HIRL Rwy 16-34

MIRL Rwy 11-29

TDZ/CL Rwy 16

FAF to MAP 4.9 NM

Knots	60	90	120	150	180
Min:Sec	4:54	3:16	2:27	1:58	1:38



CATEGORY	A	B	C	D
S-ILS 34	742/60		341 (400-1¼)	
S-LOC 34	800/55	399 (400-1)	800/60	399 (400-1¼)
<b>☑</b> CIRCLING	980-1	541 (600-1)	1080-1¾ 641 (700-1¾)	1200-2½ 761 (800-2½)

NE-2, 21 MAR 2024 to 18 APR 2024

NE-2, 21 MAR 2024 to 18 APR 2024