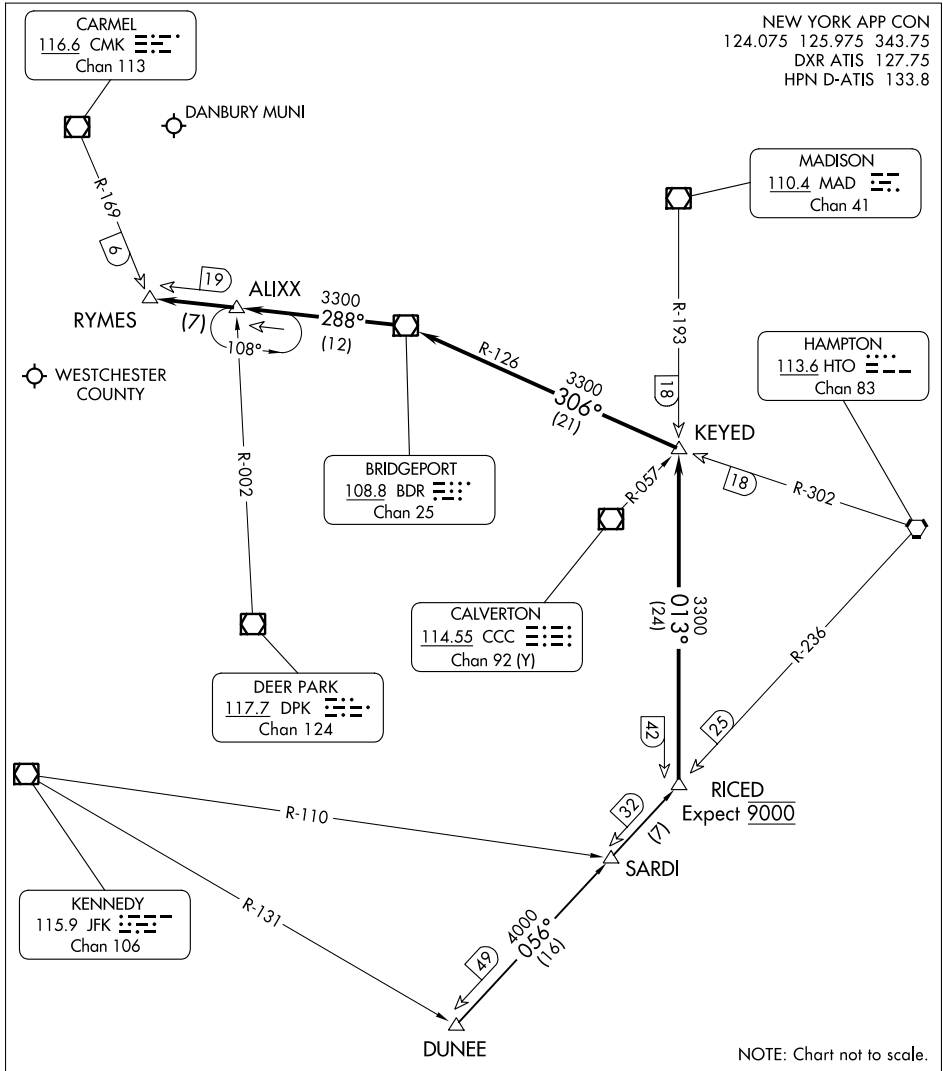


RICED FOUR ARRIVAL

WHITE PLAINS, NEW YORK

NEW YORK APP CON
124.075 125.975 343.75
DXR ATIS 127.75
HPN D-ATIS 133.8



NE-2, 21 MAR 2024 to 18 APR 2024

NE-2, 21 MAR 2024 to 18 APR 2024

NOTE: Chart not to scale.

ARRIVAL ROUTE DESCRIPTION

DUNEE TRANSITION (DUNEE.RICED4): From over DUNEE INT via HTO R-236 to RICED INT, thence. . . .

. . . .from over RICED INT via MAD R-193 to intercept BDR R-126 to BDR VOR/DME then via BDR R-288 to RYMES INT. Expect RADAR vectors to final approach course.

RICED FOUR ARRIVAL

WHITE PLAINS, NEW YORK