

APP CRS <b>343°</b>	Rwy Idg <b>6549</b>
	TDZE <b>401</b>
	Apt Elev <b>439</b>

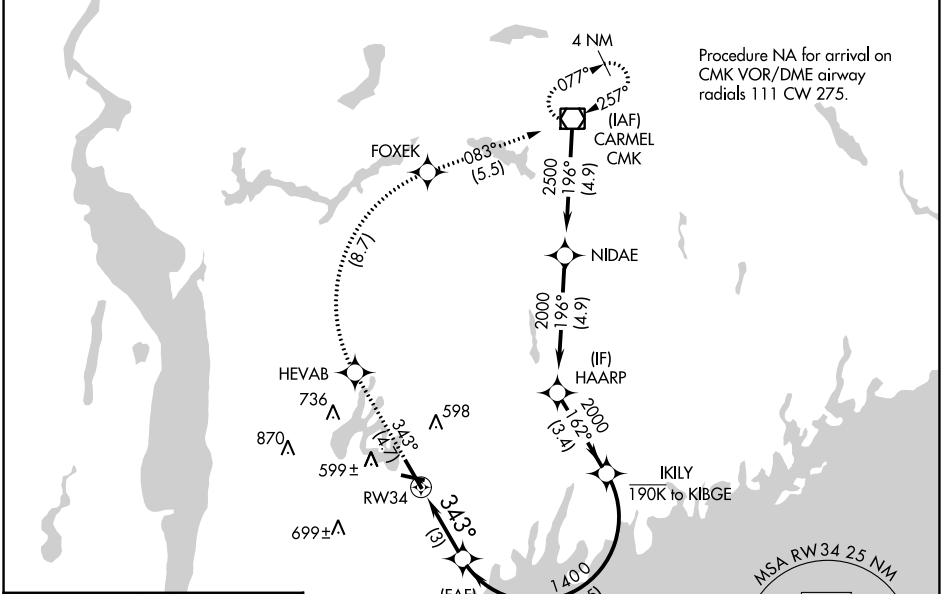
# RNAV (RNP) Z RWY 34

WESTCHESTER COUNTY (HPN)

**▼** For uncompensated Baro-VNAV systems, procedure NA below -14°C (7°F) or above 54°C (130°F). RF required. GPS required.

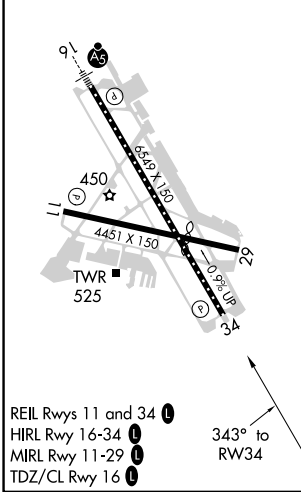
**MISSED APPROACH:** Climb to 3000 on track 343° to HEVAB, right turn to FOXEK, then on track 083° to CMK VOR/DME and hold.

D-ATIS <b>133.8</b>	NEW YORK APP CON <b>120.8 126.4 257.65</b>	WESTCHESTER TOWER ★ <b>118.575 (CTAF) 0 284.65</b>	GND CON <b>121.825</b>	CLNC DEL <b>127.25</b>	CLNC DEL <b>126.4</b> (when twr closed)	UNICOM <b>122.95</b>
------------------------	-----------------------------------------------	-------------------------------------------------------	---------------------------	---------------------------	-----------------------------------------------	-------------------------



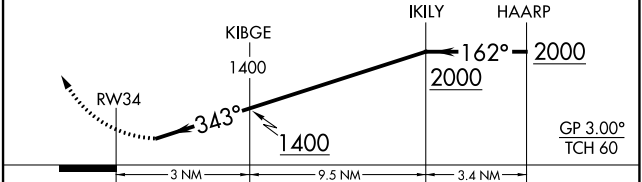
Procedure NA for arrival on CMK VOR/DME airway radials 111 CW 275.

ELEV 439	<b>D</b>	TDZE 401
----------	----------	----------



REIL Rwys 11 and 34  
HIRL Rwy 16-34  
MIRL Rwy 11-29  
TDZ/CL Rwy 16

3000	tr 343°	HEVAB	FOXEK	tr 083°	CMK	VGSI and RNAV glidepath not coincident (VGSI Angle 3.00/TCH 56).
------	---------	-------	-------	---------	-----	------------------------------------------------------------------



CATEGORY	A	B	C	D
RNP 0.30 DA		788-1 7/8	387 (400-1 3/8)	

## AUTHORIZATION REQUIRED

NE-2, 21 MAR 2024 to 18 APR 2024

NE-2, 21 MAR 2024 to 18 APR 2024