

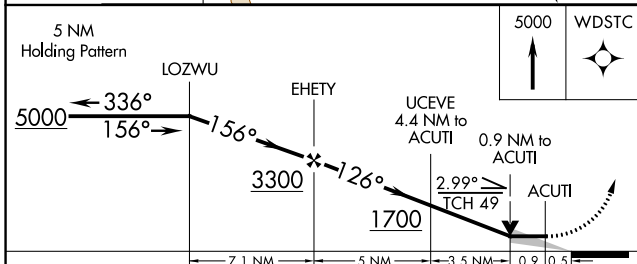
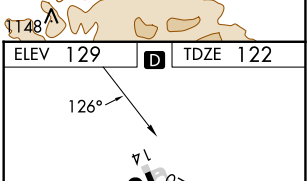
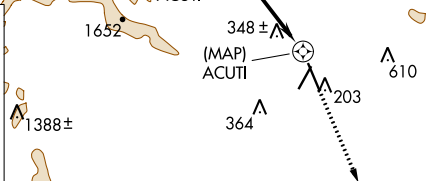
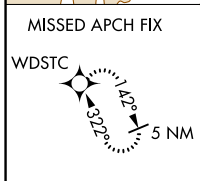
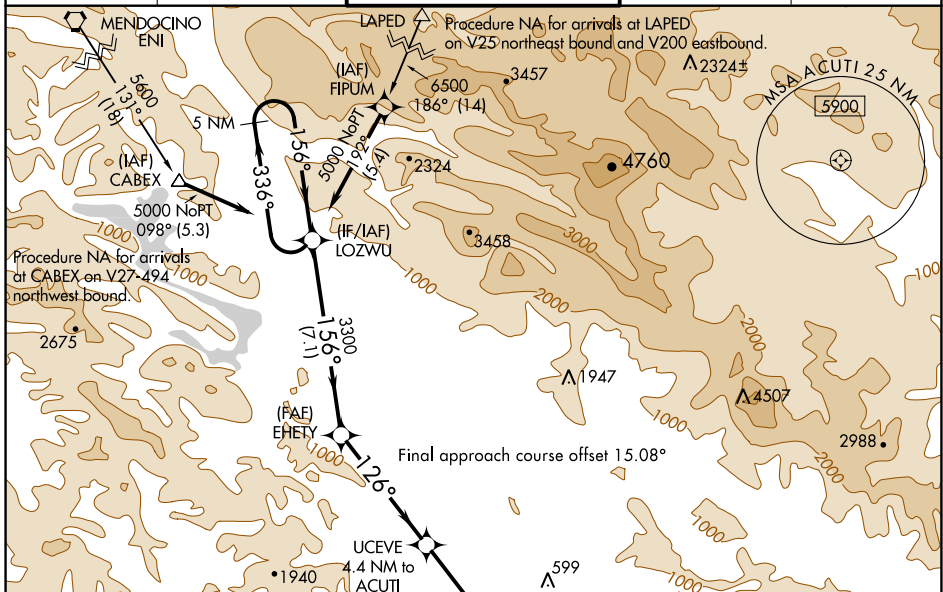
APP CRS	Rwy Idg	5880
126°	TDZE	122
	Apt Elev	129

RNAV (GPS) RWY 14

CHARLES M SCHULZ-SONOMA COUNTY (STS)

RNP APCH.		MISSED APPROACH: Climb to 5000 direct WDSTC and hold, continue climb-in-hold to 5000.		
<p>Rwy 14 helicopter visibility reduction below 3/4 SM NA.</p>				

ATIS 120.55	OAKLAND CENTER 127.8 353.5	SANTA ROSA TOWER★ 118.5 (CTAF) 363.0	GND CON 121.9	UNICOM 122.95
-----------------------	--------------------------------------	--	-------------------------	-------------------------



CATEGORY	A	B	C	D
LNVA MDA	600-1	478 (500-1)	600-1 3/8	478 (500-1 3/8)
CIRCLING	600-1 471 (500-1)	680-1 551 (600-1)	1080-3 951 (1000-3)	1420-3 1291 (1300-3)

ELEV 129	TDZE 122
MIRL Rwy 2-20	
HIRL Rwy 14-32	
REIL Rwy 14	

SW-2, 21 MAR 2024 to 18 APR 2024

SW-2, 21 MAR 2024 to 18 APR 2024