

BHHIA THREE ARRIVAL (RNAV) Transition Routes

FORT LAUDERDALE, FLORIDA

MIAMI APP CON
120.5 350.225
FLL D-ATIS
135.0
FXE ATIS
119.85
OPF ATIS
125.9
PMP ATIS
120.55

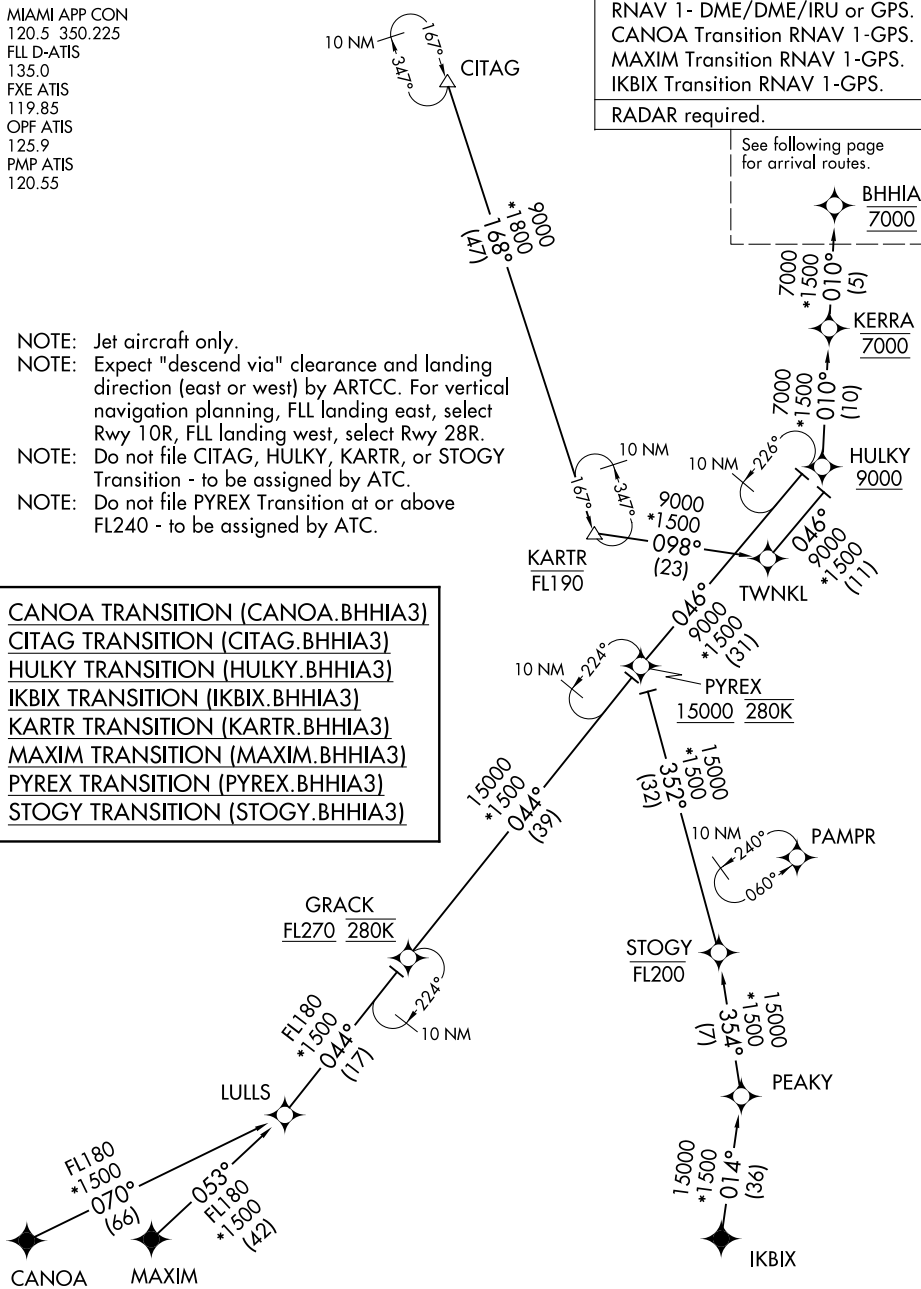
RNAV 1- DME/DME/IRU or GPS.
CANOA Transition RNAV 1-GPS.
MAXIM Transition RNAV 1-GPS.
IKBIX Transition RNAV 1-GPS.

RADAR required.

See following page
for arrival routes.

- NOTE: Jet aircraft only.
- NOTE: Expect "descend via" clearance and landing direction (east or west) by ARTCC. For vertical navigation planning, FLL landing east, select Rwy 10R, FLL landing west, select Rwy 28R.
- NOTE: Do not file CITAG, HULKY, KARTR, or STOGY Transition - to be assigned by ATC.
- NOTE: Do not file PYREX Transition at or above FL240 - to be assigned by ATC.

- CANOA TRANSITION (CANOA.BHHIA3)
- CITAG TRANSITION (CITAG.BHHIA3)
- HULKY TRANSITION (HULKY.BHHIA3)
- IKBIX TRANSITION (IKBIX.BHHIA3)
- KARTR TRANSITION (KARTR.BHHIA3)
- MAXIM TRANSITION (MAXIM.BHHIA3)
- PYREX TRANSITION (PYREX.BHHIA3)
- STOGY TRANSITION (STOGY.BHHIA3)



SE-3, 21 MAR 2024 to 18 APR 2024

SE-3, 21 MAR 2024 to 18 APR 2024

(CONTINUED ON FOLLOWING PAGE)

NOTE: Chart not to scale.