

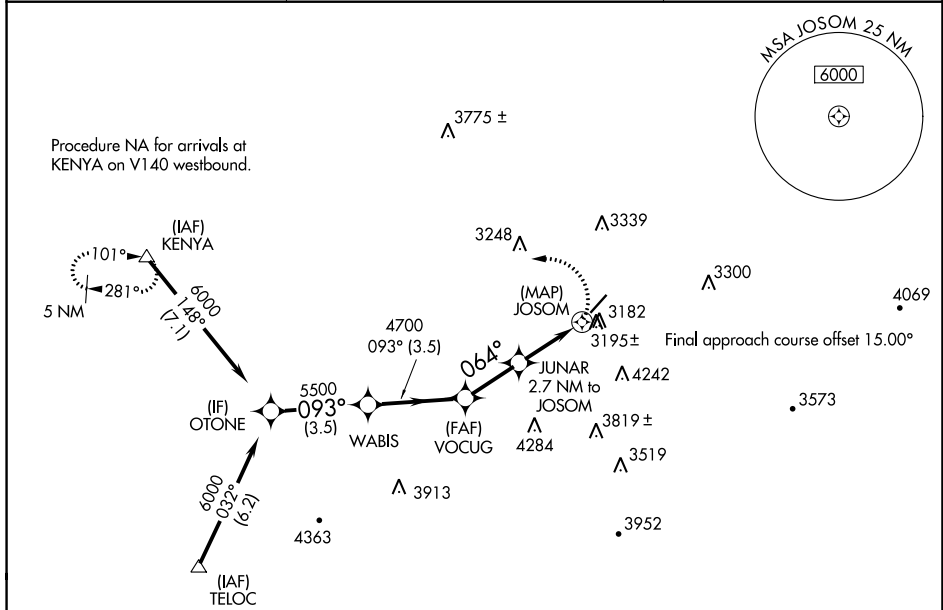
APP CRS	Rwy Idg	<b>4743</b>
<b>064°</b>	TDZE	<b>2850</b>
	Apt Elev	<b>2857</b>

# RNAV (GPS) RWY 5

MERCER COUNTY (BLF)

RNP APCH.	MISSED APPROACH: Climbing left turn to 6000 direct KENYA and hold.
Procedure NA at night. Rwy 5 helicopter visibility reduction below 1 SM NA.	

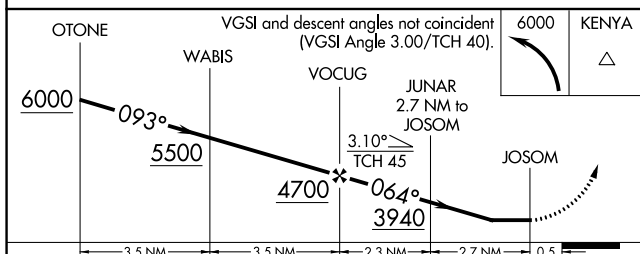
ASOS <b>132.725</b>	INDIANAPOLIS CENTER <b>126.575 257.85</b>	CTAF <b>122.9</b>
------------------------	--	----------------------



NE-4, 21 MAR 2024 to 18 APR 2024

NE-4, 21 MAR 2024 to 18 APR 2024

ELEV 2857	TDZE 2850
-----------	-----------



CATEGORY	A	B	C	D
LNAV MDA	3560-1	710 (800-1)	3560-2	3560-2 1/4
			710 (800-2)	710 (800-2 1/4)

