

VOR/DME BLF <b>115.05</b> Chan <b>97</b> (Y)	APP CRS <b>225°</b>	Rwy Idg TDZE Apt Elev	<b>4743</b> <b>2857</b> <b>2857</b>
--	------------------------	-----------------------------	---

# VOR RWY 23

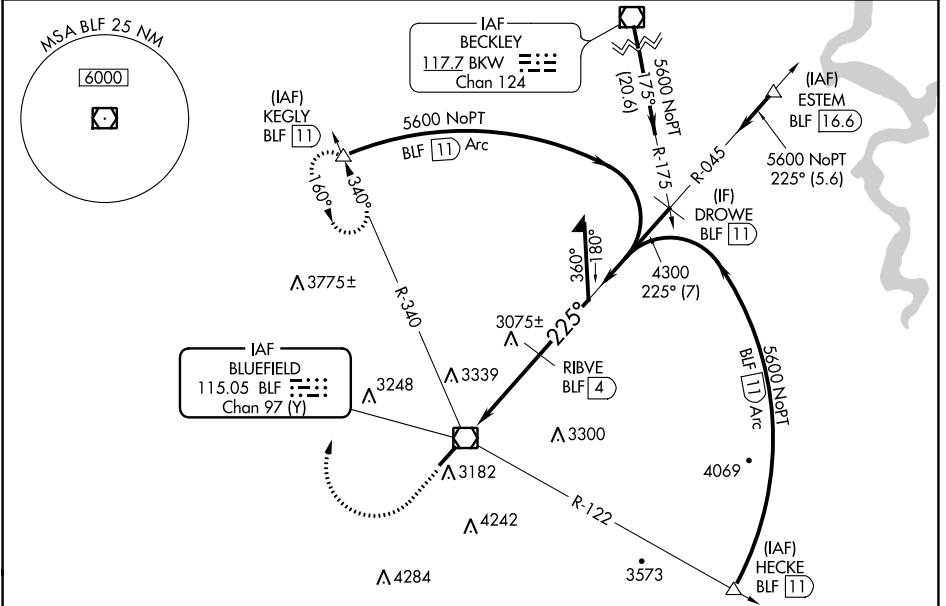
MERCER COUNTY (BLF)

DME required.

When local altimeter setting not received, use Beckley altimeter setting and increase all MDAs 460 feet: increase S-23 visibility Cat A ¼ SM, Cat B ½ SM, Cat C 1 ½ SM, Cat D 1 ¼ SM; increase Circling visibility Cat A ¼ SM, Cat B ½ SM, Cat C ¾ SM. VDP NA when using Beckley altimeter setting. Circling NA southeast of Rwy 5-23.

MISSED APPROACH: Climb to 3800 then climbing right turn to 6000 on heading 020° and BLF R-340 to KEGLY/BLF 11 DME and hold.

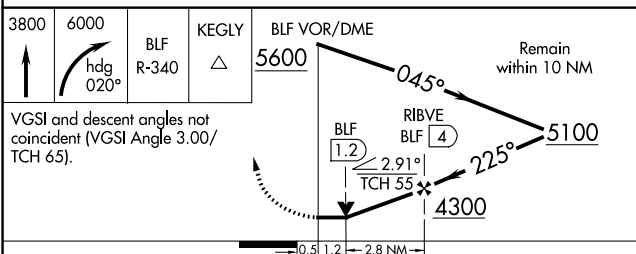
ASOS <b>132.725</b>	INDIANAPOLIS CENTER <b>126.575 257.85</b>	CTAF <b>122.9</b>
------------------------	--	----------------------



NE-4, 21 MAR 2024 to 18 APR 2024

NE-4, 21 MAR 2024 to 18 APR 2024

ELEV 2857	<b>D</b> TDZE 2857
-----------	--------------------



CATEGORY	A	B	C	D
S-23	3440-1	583 (600-1)	3440-1½ 583 (600-1½)	3440-1¾ 583 (600-1¾)
CIRCLING	3440-1 583 (600-1)	3460-1 603 (700-1)	3640-2¼ 783 (800-2¼)	3780-3 923 (1000-3)

