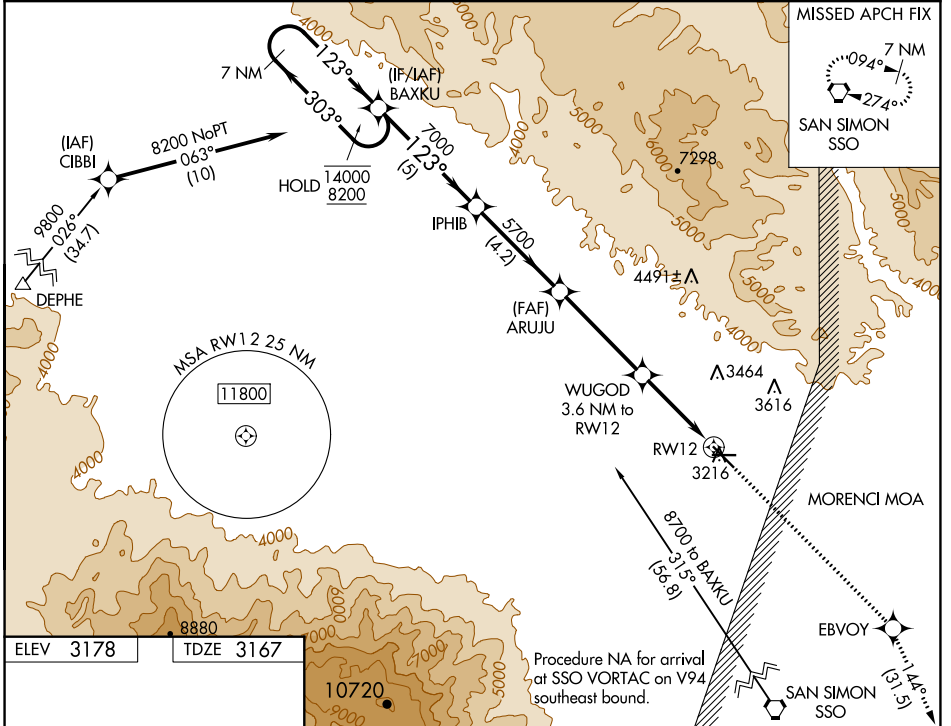


WAAS CH <b>69516</b> <b>W12A</b>	APP CRS <b>123°</b>	Rwy Idg TDZE Apt Elev	<b>6007</b> <b>3167</b> <b>3178</b>
--	------------------------	-----------------------------	---

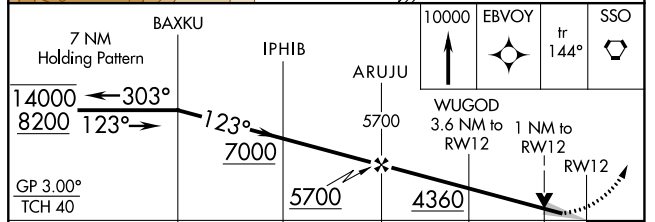
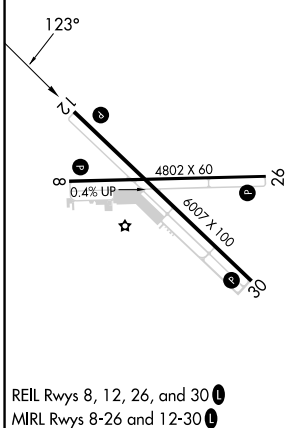
# RNAV (GPS) RWY 12

SAFFORD RGNL (SAD)

RNP APCH - GPS.		ALBUQUERQUE CENTER <b>134.45 327.15</b>		UNICOM <b>122.8 (CTAF) 0</b>	
<p><b>⚠</b> Circling to Rwy 8 NA at night. Circling NA northeast of Rwy 12 and north of Rwy 26. For uncompensated Baro-VNAV systems, LNAV/VNAV NA below -6°C or above 54°C.</p>		<p>MISSED APPROACH: Climb to 10000 direct EBVOY and on track 144° to SSO VORTAC and hold.</p>			



ELEV 3178	TDZE 3167
-----------	-----------



CATEGORY	A				B		C		D	
	A				B		C		D	
LPV DA					3417-¾		250 (300-¾)			
LNAV/VNAV DA					3417-¾		250 (300-¾)			
LNAV MDA					3520-1		353 (400-1)			
CIRCLING	3580-1		3640-1		3640-1½		3900-2¼			
	402 (500-1)		462 (500-1)		462 (500-1½)		722 (800-2¼)			

SAFFORD, ARIZONA  
Amdt 1 30NOV23

32°51'N-109°38'W

SAFFORD RGNL (SAD)  
**RNAV (GPS) RWY 12**

SW-4, 21 MAR 2024 to 18 APR 2024

SW-4, 21 MAR 2024 to 18 APR 2024