

WAAS CH 78316 W30A	APP CRS 303°	Rwy Idg TDZE Apt Elev	6007 3169 3178
--	------------------------	-----------------------------	---

RNAV (GPS) RWY 30

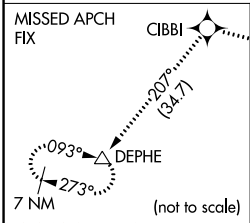
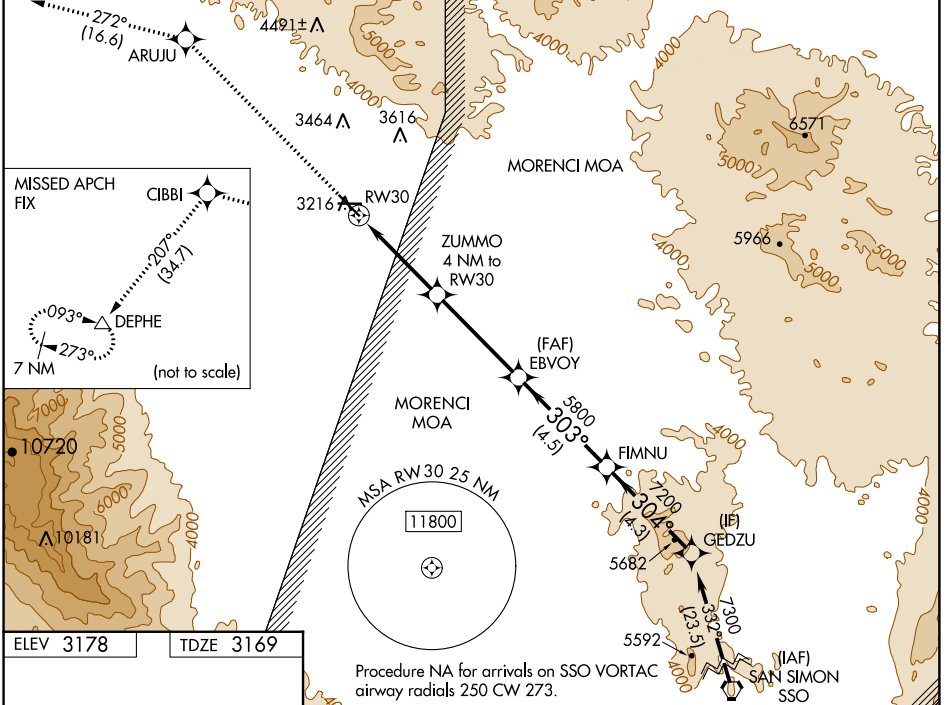
SAFFORD RGNL (SAD)

RNP APCH - GPS.

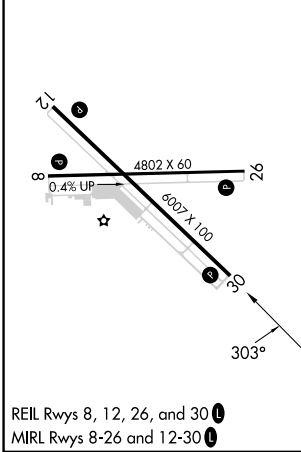
⚠ Circling to Rwy 8 NA at night. Circling NA northeast of Rwy 12 and north of Rwy 26. For uncompensated Baro-VNAV systems, LNAV/VNAV NA below -6°C or above 54°C.

⚠ MISSED APPROACH: Climb to 10000 direct ARUJU and on track 272° to CIBBI and on track 207° to DEPHE and hold.

ASOS 124.175	ALBUQUERQUE CENTER 134.45 327.15	UNICOM 122.8 (CTAF) 0
------------------------	--	---------------------------------



ELEV 3178	TDZE 3169
-----------	-----------



10000	ARUJU	tr 272°	CIBBI	tr 207°	DEPHE	GEDZU	
						FIMNU	
			ZUMMO 4 NM to RW30	EBVOY 5800		7200	7300
			4480	303°	304°		GP 3.00° TCH 40
		1.2 NM	2.8 NM	4.1 NM	4.5 NM	4.3 NM	

CATEGORY	A		B		C		D
LPV DA	3419-3/4		250 (300-3/4)				
LNAV/VNAV DA	3517-1		348 (400-1)				
LNAV MDA	3600-1		431 (500-1)		3600-1 1/4		431 (500-1 1/4)
CIRCLING	3600-1 422 (500-1)		3640-1 462 (500-1)		3640-1 1/2 462 (500-1 1/2)		3900-2 1/4 722 (800-2 1/4)

SW-4, 21 MAR 2024 to 18 APR 2024

SW-4, 21 MAR 2024 to 18 APR 2024