

| | | | |
|--|------------------------|-----------------------------|---|
| WAAS CH 93836 W12A | APP CRS 127° | Rwy Idg TDZE Apt Elev | 7506 4457 4457 |
|--|------------------------|-----------------------------|---|

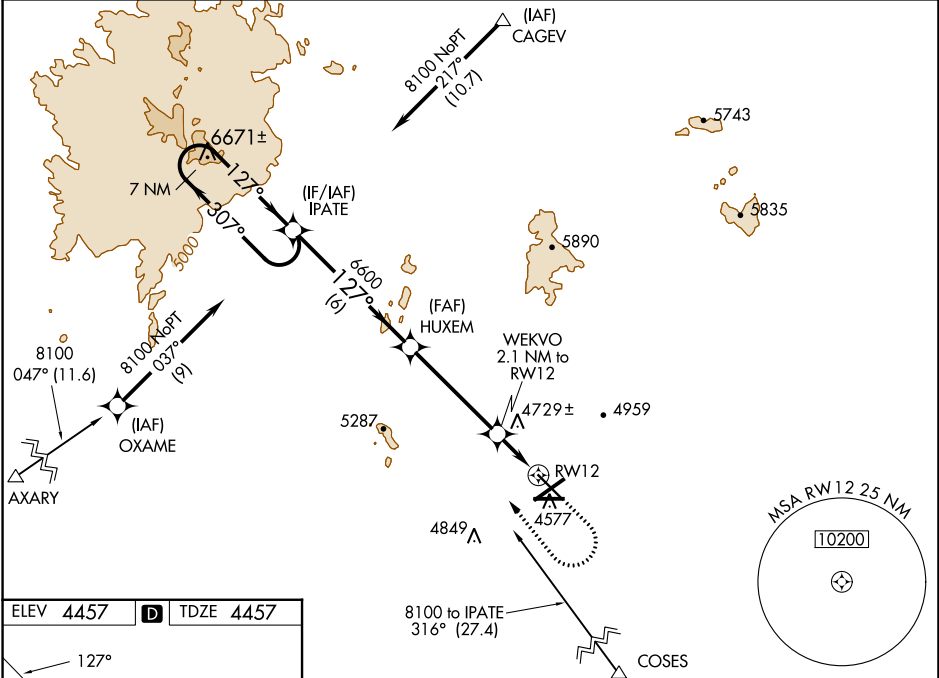
RNAV (GPS) RWY 12

LAS CRUCES INTL (LRU)

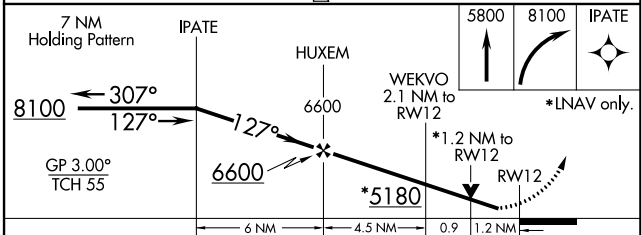
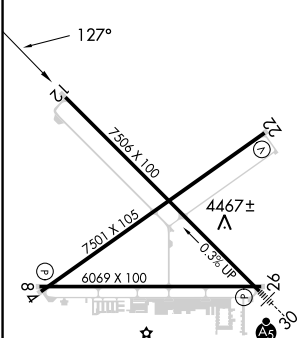
⚠ For uncompensated Baro-VNAV systems, LNAV/VNAV NA below -12 °C (11 °F) or above 49 °C (120 °F). DME/DME RNP-0.3 NA. Helicopter visibility reduction below 3/4 SM NA. Baro-VNAV and VDP NA when using Deming altimeter setting. When local altimeter setting not received, use Deming altimeter setting; increase LPV DA to 4821 feet and LNAV/VNAV DA to 4824 feet and all visibilities 1/2 mile; increase all MDA 120 feet and visibility Cat C and D 1/2 mile.

MISSED APPROACH: Climb to 5800 then climbing right turn to 8100 direct IPATE and hold.

| | | |
|--------------------------|--|---------------------------------|
| AWOS-3 119,025 | ALBUQUERQUE CENTER 128.2 285.5 | UNICOM 122.7 (CTAF) 0 |
|--------------------------|--|---------------------------------|



| | | |
|------------------|----------|------------------|
| ELEV 4457 | D | TDZE 4457 |
|------------------|----------|------------------|



| CATEGORY | A | B | C | D |
|-------------------|-----------------------|-----------------------|-------------------------------|-------------------------------|
| LPV DA | | 4707-3/4 | 250 (300-3/4) | |
| LNAV/VNAV DA | | 4710-3/4 | 253 (300-3/4) | |
| LNAV MDA | 4900-1 | 443 (500-1) | 4900-13/8 | 443 (500-13/8) |
| C CIRCLING | 4900-1 443 (500-1) | 5040-1 583 (600-1) | 5320-2 1/2 863 (900-2 1/2) | 5320-2 3/4 863 (900-2 3/4) |

REIL Rwy 12
HIRL Rwy 12-30 0
MIRL Rwy 4-22 and 8-26 0

LAS CRUCES, NEW MEXICO
Amdt 2 18AUG16

32°17'N-106°55'W

RNAV (GPS) RWY 12

SW-1, 21 MAR 2024 to 18 APR 2024

SW-1, 21 MAR 2024 to 18 APR 2024