

WAAS CH 63136 W30A	APP CRS 307°	Rwy Idg TDZE Apt Elev	7500 4444 4457
----------------------------------------	------------------------	-----------------------------	-------------------------------------------

RNAV (GPS) RWY 30

LAS CRUCES INTL (LRU)

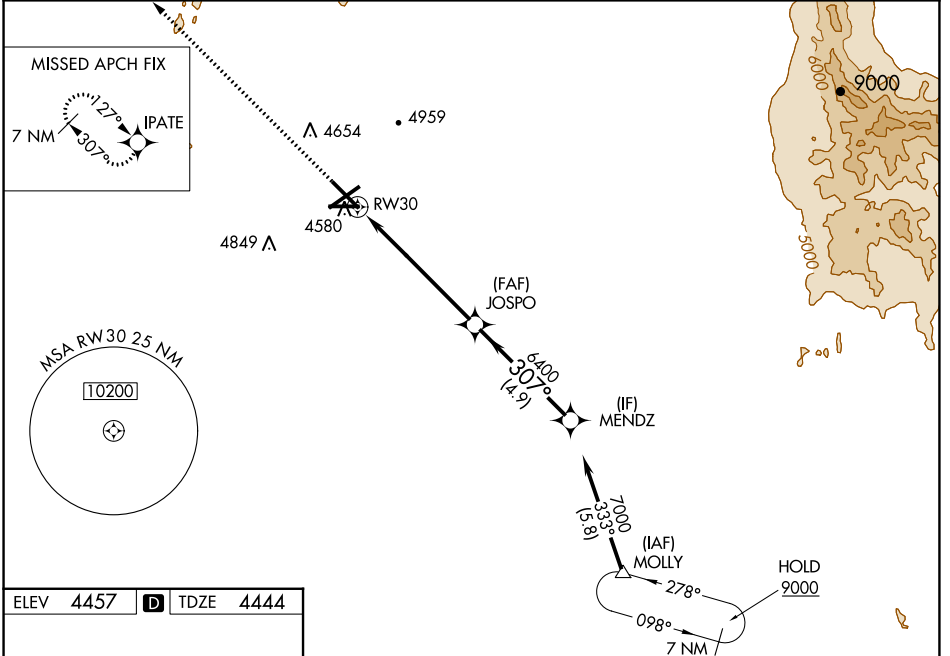
⚠ For uncompensated Baro-VNAV systems, LNAV/VNAV NA below -12°C (11°F) or above 51°C (124°F). DME/DME RNP-0.3 NA. Baro-VNAV and VDP NA when using Deming altimeter setting. When local altimeter setting not received, use Deming altimeter setting; increase LPV DA to 4758 feet, LNAV/VNAV DA to 4863 feet and all visibilities $\frac{3}{8}$ mile; increase all MDA 120 feet and visibility Cat C and D $\frac{1}{2}$ mile.

MALSR

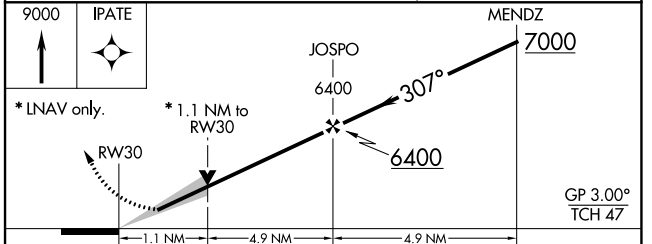
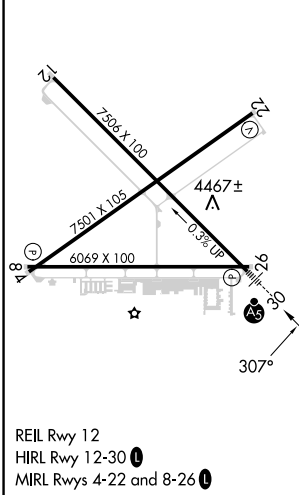


MISSED APPROACH: Climb to 9000 direct IPATE and hold, continue climb-in-hold to 9000.

AWOS-3 119.025	ALBUQUERQUE CENTER 128.2 285.5	UNICOM 122.7 (CTAF)
--------------------------	------------------------------------------	-------------------------------



ELEV 4457	D	TDZE 4444
------------------	----------	------------------



CATEGORY	A	B	C	D
LPV DA	4644- $\frac{1}{2}$		200 (200- $\frac{1}{2}$)	
LNAV/VNAV DA	4749- $\frac{5}{8}$		305 (300- $\frac{5}{8}$)	
LNAV MDA	4840- $\frac{1}{2}$ 396 (400- $\frac{1}{2}$)		4840- $\frac{5}{8}$ 396 (400- $\frac{5}{8}$)	
C CIRCLING	4900-1 443 (500-1)	5040-1 583 (600-1)	5320-2 $\frac{1}{2}$ 863 (900-2 $\frac{1}{2}$)	5320-2 $\frac{3}{4}$ 863 (900-2 $\frac{3}{4}$)