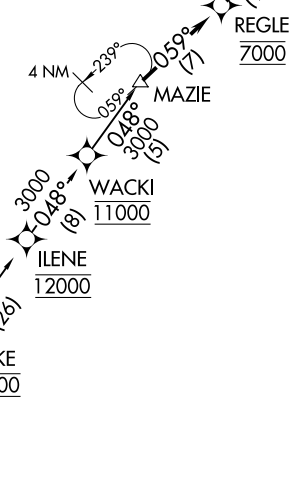
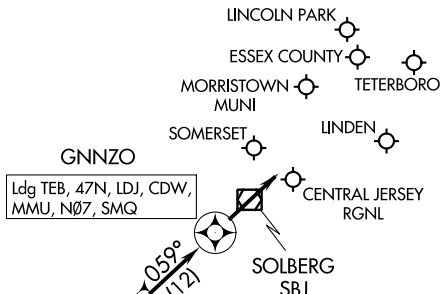


# MAZIE THREE ARRIVAL (RNAV)

TETERBORO, NEW JERSEY

POTOMAC APP CON  
 124.55 317.425  
 PHILADELPHIA APP CON  
 119.75 269.25  
 NEW YORK APP CON  
 132.8 379.9  
 CDW ATIS  
 135.5  
 MMU ATIS  
 124.25  
 TEB D-ATIS  
 114.2 132.85



- NOTE: RADAR required.
- NOTE: RNAV 1.
- NOTE: DME/DME/IRU or GPS required.
- NOTE: Turboprop aircraft only.

NOTE: Chart not to scale.

## ARRIVAL ROUTE DESCRIPTION

SHLBK TRANSITION (SHLBK.MAZIE3)  
SWANN TRANSITION (SWANN.MAZIE3)

**LANDING ALL AIRPORTS:** From MAZIE on track 059° to cross REGLE at 7000, then on track 059° to GNNZO, then on track 059°. Expect RADAR vectors to final approach course.

**LOST COMMUNICATIONS:** After REGLE at 7000', proceed direct GNNZO, cross GNNZO at 3000', proceed direct SBJ VOR/DME, then proceed with approach.

NE-2, 21 MAR 2024 to 18 APR 2024

NE-2, 21 MAR 2024 to 18 APR 2024

# MAZIE THREE ARRIVAL (RNAV)

TETERBORO, NEW JERSEY