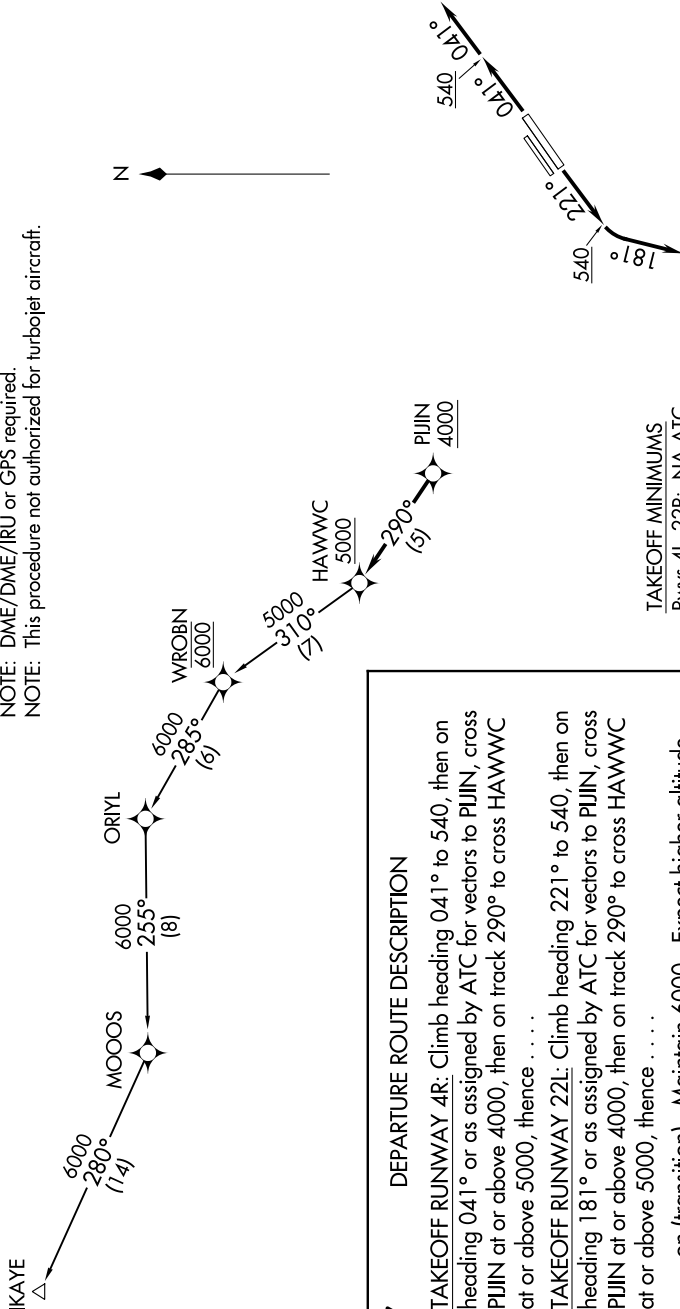


SW-3, 21 MAR 2024 to 18 APR 2024

TOP ALTITUDE:
6000

GND CON
126.95 257.95
LOS ALAMITOS TOWER*
123.85 251.15
SOCAL DEP CON
125.35 316.125

NOTE: RADAR required.
NOTE: RNAV 1.
NOTE: DME/DME/IRU or GPS required.
NOTE: This procedure not authorized for turbojet aircraft.



TAKEOFF MINIMUMS
Rwys 4L, 22R: NA-ATC.
Rwys 4R, 22L: Standard.

DEPARTURE ROUTE DESCRIPTION

TAKEOFF RUNWAY 4R: Climb heading 041° to 540, then on heading 041° or as assigned by ATC for vectors to PUJIN, cross PUJIN at or above 4000, then on track 290° to cross HAWWC at or above 5000, thence

TAKEOFF RUNWAY 22L: Climb heading 221° to 540, then on heading 181° or as assigned by ATC for vectors to PUJIN, cross PUJIN at or above 4000, then on track 290° to cross HAWWC at or above 5000, thence

. . . . on (transition). Maintain 6000. Expect higher altitude 10 minutes after departure.

IKAYE TRANSITION (HAWWC3.IKAYE)

NOTE: Chart not to scale.

SW-3, 21 MAR 2024 to 18 APR 2024