

LOS ALAMITOS, CALIFORNIA

RNAV (GPS) RWY 22L

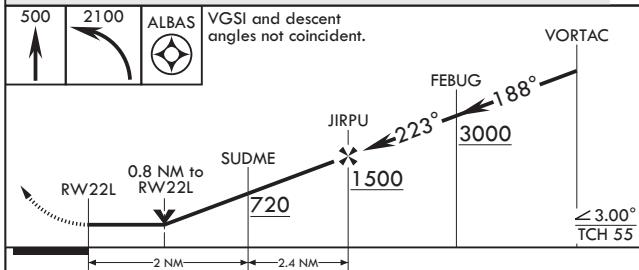
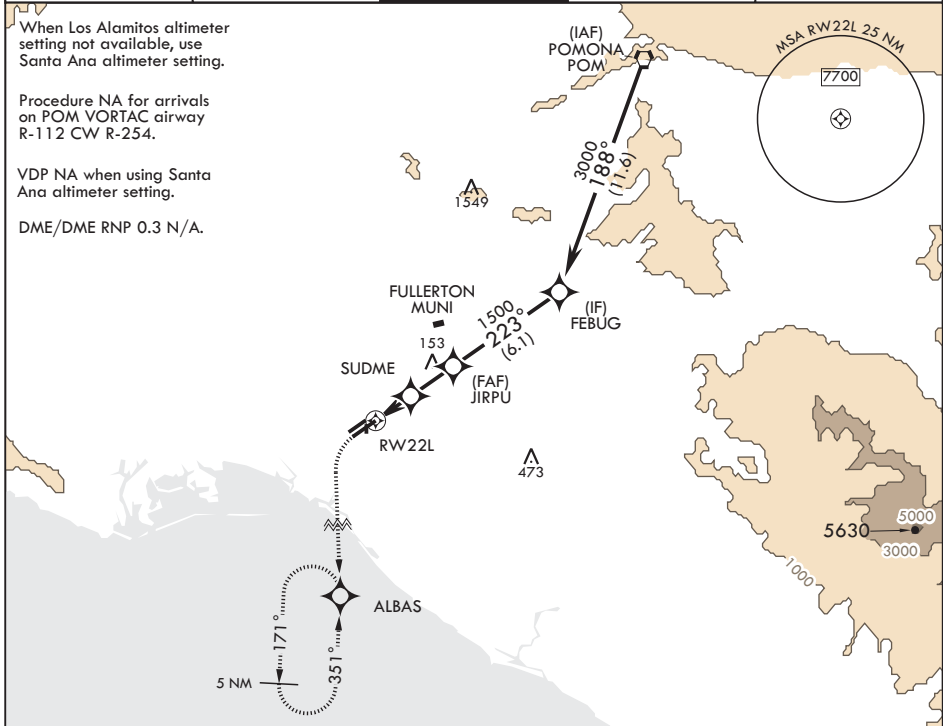
APCH CRS	Rwy Idg	8001
223°	TDZE	35
	Arprt Elev	35

AL-953 (USA)

LOS ALAMITOS AAF (KSLI)

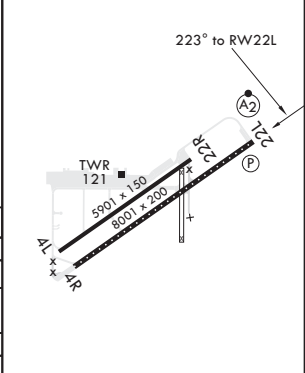
	* When ALS inop, increase CAT D vis to 1 mile.		MISSED APPROACH: Climb to 500 then climbing left turn to 2100 direct ALBAS and hold.
	** When ALS inop using SANTA ANA altimeter setting, increase CAT D vis to 1 1/8 mile.		
	*** Circling not authorized N of Rwy 4L-22R.		

ATIS*	SOCAL APP CON	TOWER*	GND CON	ASR/PAR
118.875 379.975	125.35 316.125	123.85 (CTAF) 251.15	126.95 257.95	



ELEV 35	TDZE 35
---------	---------

CATEGORY	A	B	C	D
LNAV MDA*	380-3/4 345 (400-3/4)			
CIRCLING***	440-1	500-1	560-1½	680-2
	405 (500-1)	465 (500-1)	525 (600-1½)	645 (700-2)
SANTA ANA ALTIMETER SETTING MINIMUMS				
LNAV MDA**	420-3/4	385 (400-3/4)	420-7/8	385 (400-7/8)
CIRCLING***	480-1	540-1	600-1½	720-2
	445 (500-1)	505 (600-1)	565 (600-1½)	685 (700-2)



REIL Rwy 22L
 HIRL Rwy 4R-22L
 MIRL Rwy 4L-22R

LOS ALAMITOS, CALIFORNIA

33°47'N - 118°03'W

LOS ALAMITOS AAF (KSLI)

Amdt 1 07DEC17

RNAV (GPS) RWY 22L

SW-3, 21 MAR 2024 to 18 APR 2024

SW-3, 21 MAR 2024 to 18 APR 2024