

LOS ALAMITOS, CALIFORNIA

VOR or TACAN RWY 22L

VORTAC SLI 115.7 Chan 104	APCH CRS 214°	Rwy ldg TDZE Arprt Elev 8001 35 35
---	-------------------------	--

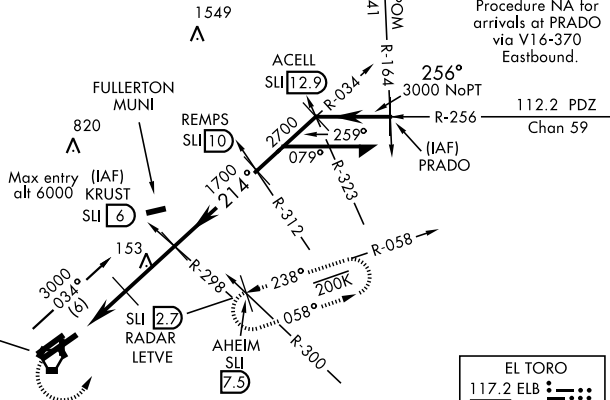
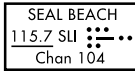
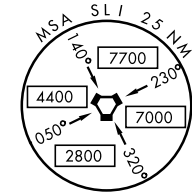
AL-953 [USA]

LOS ALAMITOS AAF (KSLI)

DME required.	SALSF 	MISSED APPROACH: Climb to 1800, then climbing left turn to 3000 via SLI VORTAC R-058 to AHEIM INT and hold.
---------------	-----------	---

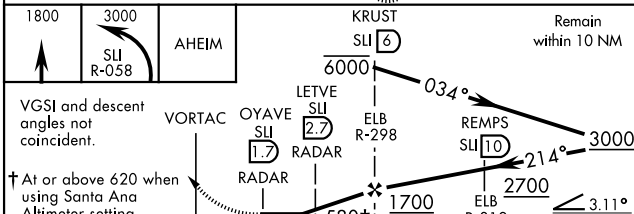
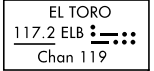
ATIS ★ 118.875 379.975	SOCAL APP CON 125.35 316.125	TOWER★ 123.85 251.15	GND CON 126.95 257.95	ASR/ PAR
----------------------------------	--	--------------------------------	---------------------------------	-------------

When Los Alamitos altimeter setting not available, use Santa Ana altimeter setting.



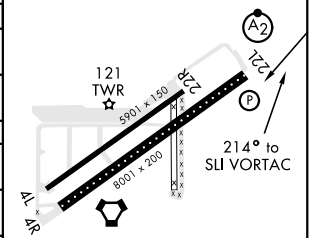
Procedure NA for arrivals at PRADO via V16-370 Eastbound.

112.2 PDZ Chan 59



ELEV 35	TDZE 35
---------	---------

CATEGORY	A	B	C	D
S-22L *	440-¾	405 (500-¾)	440-1 405 (500-1)	440-1¼ 405 (500-1¼)
CIRCLING **	440-1 405 (500-1)	500-1 465 (500-1)	500-1½ 465 (500-1½)	600-2 565 (600-2)
WITHOUT DME or RADAR				
S-22L	580-¾	545 (600-¾)	580-1¼ 545 (600-1¼)	580-1½ 545 (600-1½)
CIRCLING **	580-1	545 (600-1)	580-1½ 545 (600-1½)	600-2 565 (600-2)
SANTA ANA ALTIMETER SETTING MINIMUMS				
S-22L *	480-¾	445 (500-¾)	480-1 445 (500-1)	480-1½ 445 (500-1½)
CIRCLING **	480-1 445 (500-1)	540-1 505 (600-1)	540-1½ 505 (600-1½)	640-2 605 (700-2)
SANTA ANA ALTIMETER SETTING WITHOUT DME or RADAR				
S-22L	620-¾	585 (600-¾)	620-1¼ 585 (600-1¼)	620-1½ 585 (600-1½)
CIRCLING **	620-1	585 (600-1)	620-1½ 585 (600-1½)	640-2 605 (700-2)



HRL Rwy 4R-22L	MIRL Rwy 4L-22R	REIL Rwy 22L			
FAF to MAP 4.3 NM					
Knots	60	90	120	150	180
Min:Sec	4:18	2:52	2:09	1:43	1:26

LOS ALAMITOS, CALIFORNIA
Amdt 7A 24FEB22

33°47'N-118°03'W

LOS ALAMITOS AAF (KSLI)

VOR or TACAN RWY 22L

SW-3, 21 MAR 2024 to 18 APR 2024

SW-3, 21 MAR 2024 to 18 APR 2024