


LOC I-RHI 111.3	APP CRS 091°	Rwy Idg 6799
		TDZE 1623
		Apt Elev 1623

ILS or LOC RWY 9
RHINELANDER/ONEIDA COUNTY (RHI)

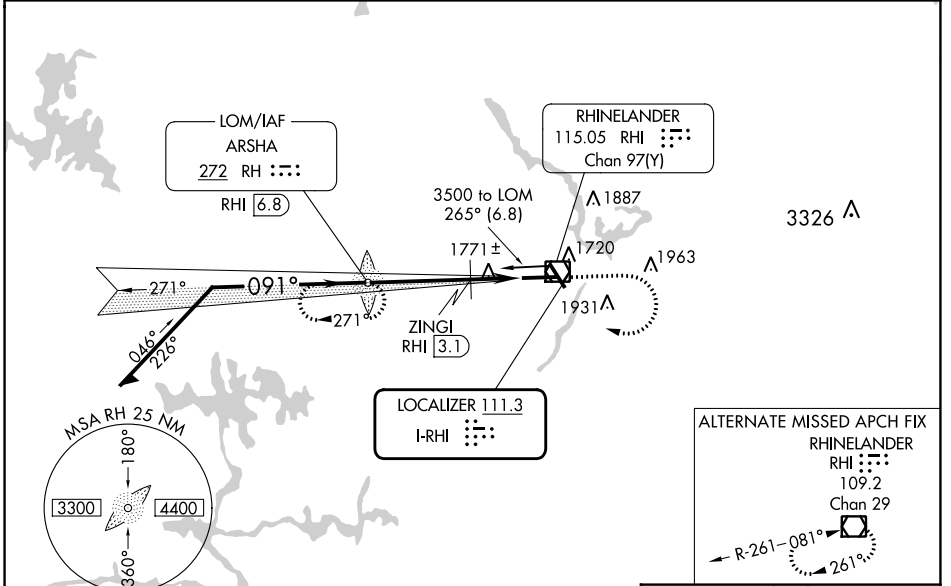
ADF or DME required.

MAISR 

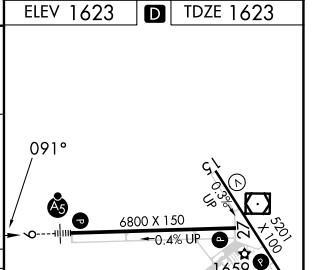
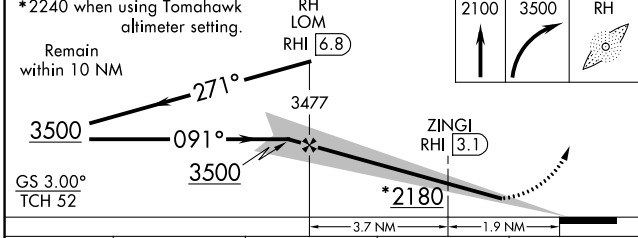
MISSED APPROACH:
Climb to 2100 then climbing right turn to 3500 direct ARSHA LOM/RHI VOR/DME 6.8 DME and hold, continue climb-in-hold to 3500.

▲ NA ** DME from RHI VOR/DME.

ASOS 126.825	MINNEAPOLIS CENTER 133.65 281.5	UNICOM 123.0 (CTAF) ①
------------------------	---	---------------------------------



ELEV 1623	D TDZE 1623
-----------	--------------------



CATEGORY	A	B	C	D
S-ILS 9	1823-½ 200 (200-½)			
S-LOC 9	2180-½ 557 (600-½)	2180-1¼ 557 (600-1½)		
C CIRCLING	2180-1 557 (600-1)	2260-1 637 (700-1)	2260-1¾ 637 (700-1¾)	2280-2 657 (700-2)
ZINGI FIX MINIMUMS**				
S-LOC 9	2040-½ 417 (500-½)	2040-¾ 417 (500-¾)		
C CIRCLING	2100-1 477 (500-1)	2260-1 637 (700-1)	2260-1¾ 637 (700-1¾)	2280-2 657 (700-2)

HIRL Rws 9-27 and 15-33 ①
REIL Rws 15, 27 and 33 ①

FAF to MAP 5.6 NM

Knots	60	90	120	150	180
Min:Sec	5:36	3:44	2:48	2:14	1:52

EC-3, 21 MAR 2024 to 18 APR 2024

EC-3, 21 MAR 2024 to 18 APR 2024