

WAAS CH 69407 W33A	APP CRS 330°	Rwy Idg TDZE Apt Elev	5201 1611 1624
--	------------------------	-----------------------------	---

RNAV (GPS) RWY 33

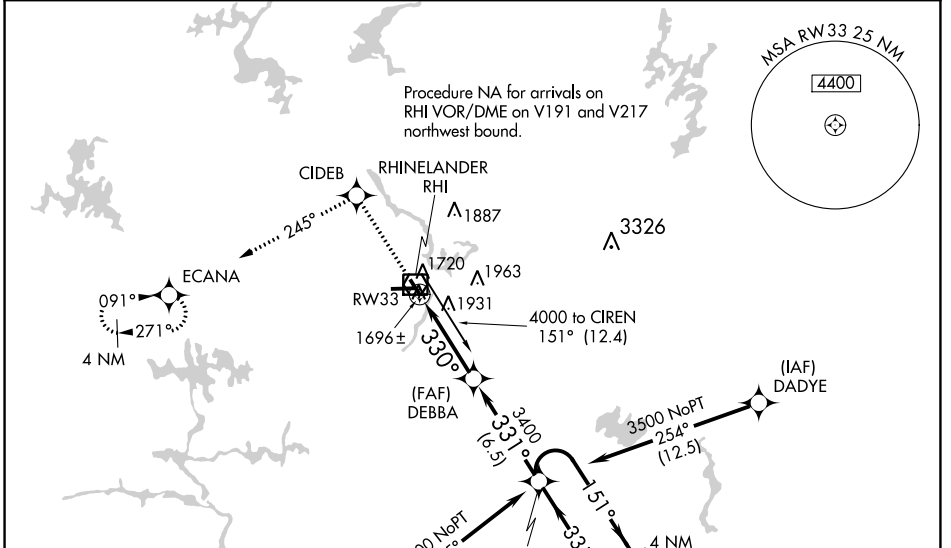
RHINELANDER/ONEIDA COUNTY (RHI)

RNP APCH - GPS.

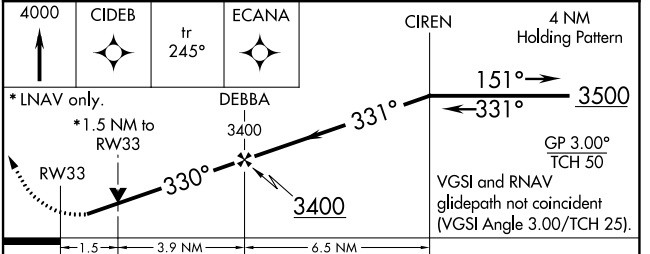
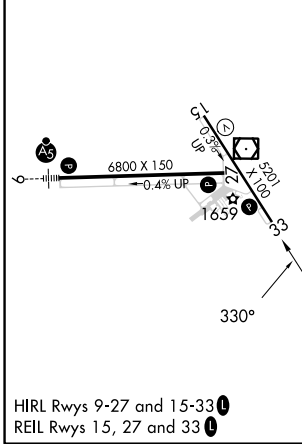
⚠ Baro-VNAV NA when using Tomahawk altimeter setting. For uncompensated Baro-VNAV systems, LNAV/VNAV NA below -18°C or above 54°C. Helicopter visibility reduction below 3/4 SM NA. When local altimeter setting not received, use Tomahawk altimeter setting: increase LPV DA to 1921 feet; increase LNAV/VNAV DA to 2316 feet and visibility 1/4 SM; increase all MDAs 60 feet and visibility Cat C and D 1/4 SM.

⚠ MISSED APPROACH: Climb to 4000 direct CIDEB and on track 245° to ECANA and hold.

ASOS 126.825	MINNEAPOLIS CENTER 133.65 281.5	UNICOM 123.0 (CTAF) 0
------------------------	---	---------------------------------



ELEV 1624	D	TDZE 1611
-----------	----------	-----------



CATEGORY	A	B	C	D
LPV DA		1862-1	250 (300-1)	
LNAV/VNAV DA		2257-2 1/4	645 (700-2 1/4)	
LNAV MDA	2120-1	508 (500-1)	2120-1 1/2	508 (500-1 1/2)
CIRCLING	2120-1 496 (500-1)	2260-1 636 (700-1)	2260-1 3/4 636 (700-1 3/4)	2280-2 656 (700-2)

EC-3, 21 MAR 2024 to 18 APR 2024

EC-3, 21 MAR 2024 to 18 APR 2024